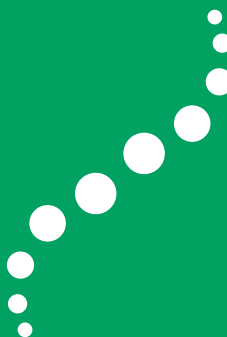


AYUSH IN INDIA 2007

Section 2



Medical Care Facilities

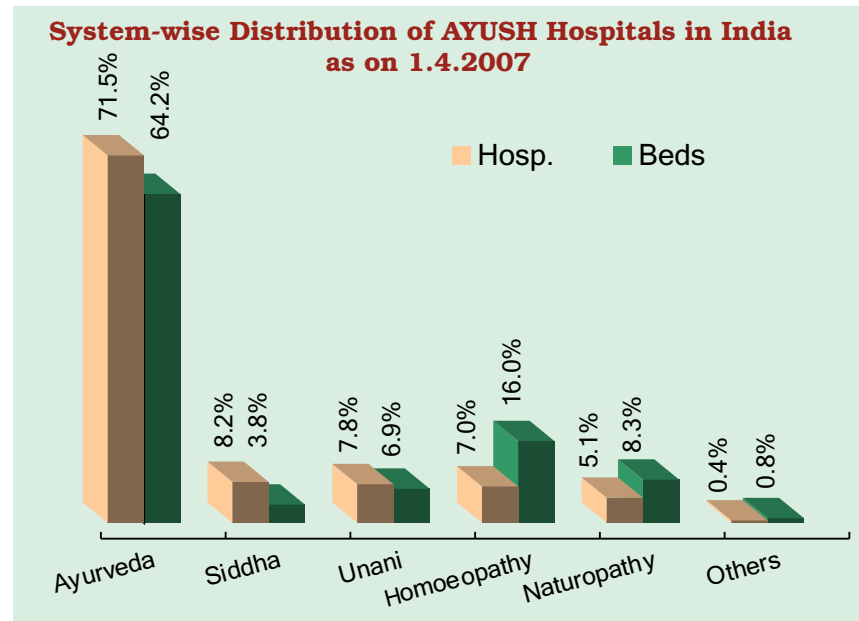


SECTION 2 : MEDICAL CARE FACILITIES

Hospitals under AYUSH systems:

T

here had been a significant rise in the health care facilities under AYUSH over the years. AYUSH hospitals and their bed capacity as on 1.4.2007 stood at 3360 and 68155 respectively for all the systems. There was a preponderance of Ayurveda hospitals, as 71.5% hospitals and 64.2% beds pertain to this system exclusively. Unani, Siddha, Yoga, Naturopathy and Homoeopathy account for the remaining 28.4% hospitals,

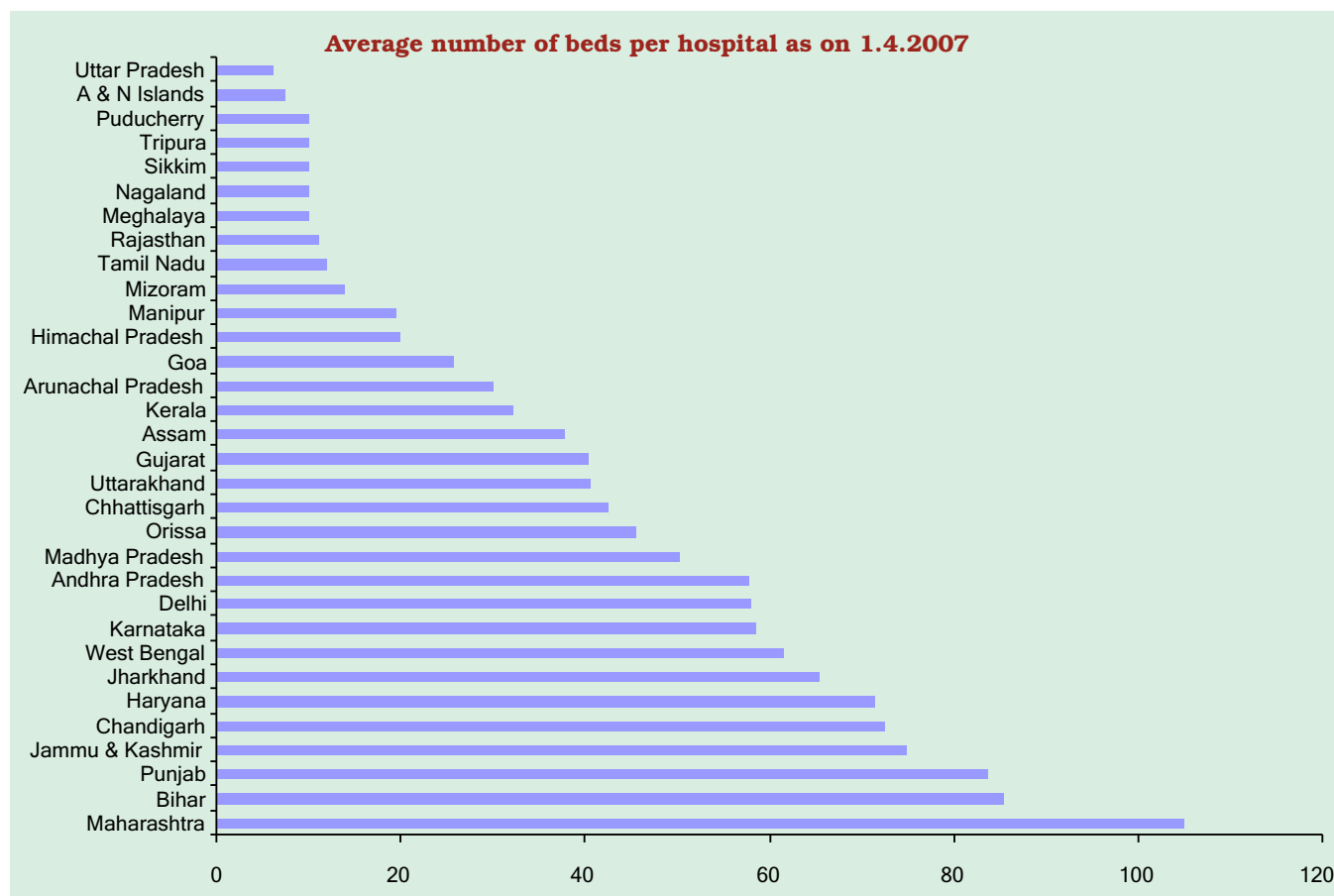


whereas 0.1% of the hospitals belong to Amchi system of medicine. The existing AYUSH hospitals in India had been further categorized by their ownership status, where 1.2% hospitals were under the control of 'CGHS & Central Government Organizations' and 83.4% hospitals were being managed by the State Governments & Union Territories directly. Only, 0.4% hospitals were being managed by local bodies and 15% hospitals fall under 'others' category as on 1.4.2007.

An average annual growth rate of 7.7% was realised in AYUSH hospitals during 1980 to 2007. AYUSH hospitals had nearly doubled in 1984 due to more than three-fold increase in Ayurveda hospitals as well as more than two-fold increase in Unani hospitals over the preceding year. Average annual growth rates of 8.7%, 10.2%, 5%, 0.5%, 6.9% and 4.2% had been observed in the hospitals of Ayurveda, Unani, Siddha, Yoga, Naturopathy and Homoeopathy respectively. Maximum annual increase of 38.2%, 50%, 25.5% and 44.2% were registered in 1982, 2007, 1991 and 1981 in case of Siddha, Yoga, Naturopathy and Homoeopathy hospitals respectively.

An average annual growth rate of 3.8% was realised in the bed strength of AYUSH hospitals during 1991 - 2007. The maximum annual growth rate of 34.6% was registered in the bed strength of AYUSH hospitals in 2000. Average annual growth rates of 3.9%, 2.9%, 4.9%, 8.5%, 4.5%, 3.4% and 1.6% had been observed in the bed strengths of Ayurveda, Unani, Siddha, Yoga, Naturopathy, Homoeopathy and Amchi hospitals respectively since 1991. Maximum annual growth rates of 46.3%, 20.3%, 27.6%, 12.1%, 25% and 28% in the bed strengths of Ayurveda, Unani, Siddha, Naturopathy, Homoeopathy and Amchi hospital were registered in the years 2000, 1996, 1996, 1999, 2000 and 2003 respectively. However, a phenomenal increase of about 2.7 times in the bed strength of Yoga hospitals had been observed in the year 2007 over the previous year.

Average number of beds per AYUSH hospital had increased from 13.8 in 1991 to 20.3 in 2007. Average number of beds per hospital of Ayurveda, Unani, Yoga, Homoeopathy and Amchi had increased from 11.5, 17, 12.3, 23.2 and 12.5 in 1991 to 18.2, 17.8, 41.3, 46.7 and 16 respectively in 2007. The in-patient capacity (number of beds) per crore population of AYUSH hospitals had increased from 439 in 1991 to 602.7 in 2007. The in-patient capacities per crore population of Ayurveda, Unani, Siddha, Yoga, Naturopathy and Homoeopathy hospitals had increased from 280.5, 35.1, 14.2, 1.6, 33.0 and 75.6 in 1991 to 387.8, 41.3, 23.0, 4.4, 50.2 and 96.7 respectively in 2007. The in-patient capacity per crore population of Amchi hospitals were 0.3 in both the years 1991 and 2007.



Barring 40 hospitals existing under the control of 'CGHS & Central Government Organizations', there were 3320 hospitals with 66639 beds in India as on 1.4.2007, which were under the jurisdiction of State Governments or Union Territories. Out of these, 60% hospitals with 18.8% beds were in the state of Uttar Pradesh, providing medical facilities to 16.6% population of India. Similarly, 9.4% hospitals with 5.6% bed strength exist in Tamilnadu serving 5.8% of population for medical treatment under these hospitals. Besides these two states, the states having higher or equivalent

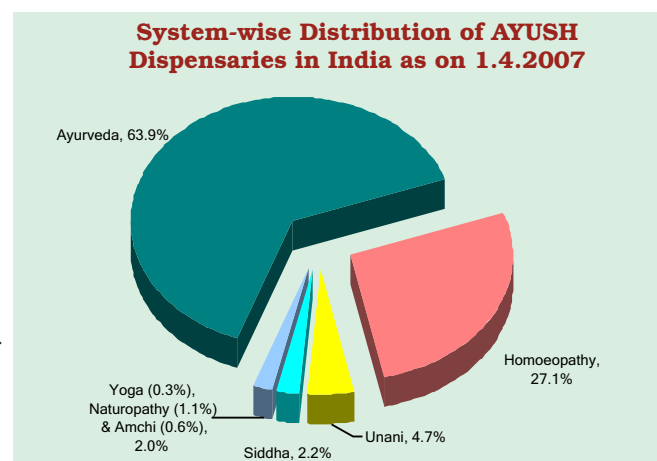
proportion of hospitals or bed strength in comparison to their population were Arunachal Pradesh, Delhi, Goa, Himachal Pradesh, Karnataka, Kerala, Maharashtra, Manipur, Meghalaya, Punjab, Andaman & Nicobar Islands and Chandigarh. There were only two hospitals each in the states of Tripura and Chandigarh, whereas, a single hospital existed in each of the states of Mizoram, Nagaland, Sikkim and Puducherry. The union territories of Dadra & Nagar Haveli, Daman & Diu and Lakshadweep were devoid of any AYUSH hospital.

Ayurveda hospitals were spread over 29 states and union territories of India. The spread of hospitals all over the country was not found to be uniform, where the state of Uttar Pradesh had nearly three-fourth of Ayurveda hospitals, Manipur, Mizoram, Nagaland, Dadra & Nagar Haveli, Daman & Diu and Lakshadweep were devoid of any Ayurveda hospital. Homoeopathy hospitals prevailed in 28 states with maximum of 19.6% hospitals (with 28.8% bed capacity) in Maharashtra, whereas states of Jammu & Kashmir, Mizoram, Sikkim and Union Territories of Dadra & Nagar Haveli, Daman & Diu, Lakshadweep and Puducherry were devoid of Homoeopathy hospitals. Unani hospitals existed in the states of Andhra Pradesh, Bihar, Chhattisgarh, Delhi, Haryana, Jammu & Kashmir, Karnataka, Madhya Pradesh, Maharashtra, Rajasthan, Tamil Nadu, Uttar Pradesh, Uttarakhand, West Bengal and in the union territory of Andaman & Nicobar Islands. 82.7% of the total Unani hospitals with 39.2% bed capacity existed in the state of Uttar Pradesh only. In case of Siddha, hospitals existed only in the states of Karnataka, Kerala, Tamil Nadu and in the union territory of Andaman & Nicobar Islands with 98.5% hospitals (92.3% bed strength) existing in Tamilnadu. Yoga hospitals prevailed in the states of Arunachal Pradesh, Assam, Bihar, Delhi, Karnataka, Maharashtra and Rajasthan. Maximum of 33.3% Yoga hospital with equal percentage of bed strength existed in Karnataka. Naturopathy hospitals existed in 23 states of the country with a maximum of 22.2% hospitals with 18.5% bed strength in Kerala.

Average number of AYUSH hospitals and bed strengths were 29.4 and 589.2 per crore population respectively in the country as on 1.4.2007. States and union territories having more than 40 hospitals per crore population on average were Himachal Pradesh, Kerala, Manipur, Tamilnadu, Uttar Pradesh and Andaman & Nicobar Islands. States having less than five hospitals per crore population were Andhra Pradesh, Assam, Bihar, Jammu & Kashmir, Jharkhand, Nagaland, Orissa and West Bengal. States and union territories having more than 800 beds per crore population were Arunachal Pradesh, Himachal Pradesh, Karnataka, Kerala, Maharashtra, Manipur and Chandigarh. States and union territories having less than 100 beds per crore population were Jharkhand, Nagaland, Tripura and Puducherry. There were only twelve states/union territories, namely, Andhra Pradesh, Bihar, Delhi, Haryana, Jammu & Kashmir, Jharkhand, Karnataka, Madhya Pradesh, Maharashtra, Punjab, West Bengal and Chandigarh having on an average more than 50 beds per hospital in the country. There were ten states and union territories, where less than 15 beds per hospitals exist and these were Meghalaya, Mizoram, Nagaland, Rajasthan, Sikkim, Tamilnadu, Tripura, Uttar Pradesh, Andaman & Nicobar Islands and Puducherry.

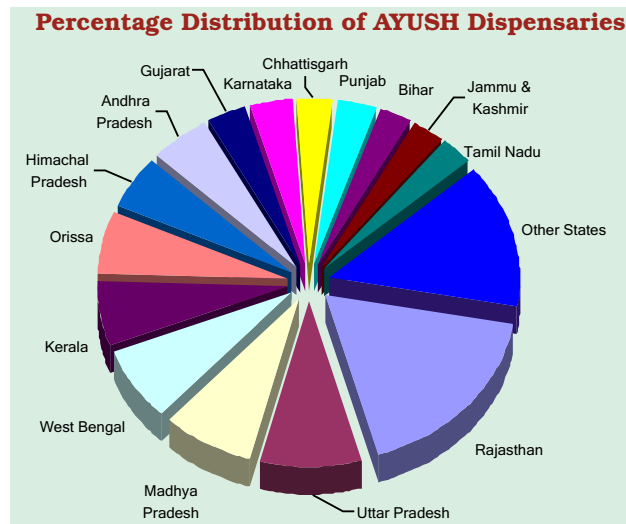
Dispensaries under AYUSH systems:

There were 21769 AYUSH dispensaries in India as on 1.4.2007. Out of which, 63.9% dispensaries pertained to Ayurveda system only, whereas, 4.7%, 2.2%, 0.3%, 1.1%, 27.1% and 0.6% dispensaries belonged to Unani, Siddha, Yoga, Naturopathy, Homoeopathy and Amchi respectively. Out of the total dispensaries existing in India as categorized by their ownership status, only 2.26% dispensaries were under the control of CGHS & Central Government Organizations as on 1.4.2007. However, 87.3% dispensaries were being managed by the States and Union Territories. Only,



7.8% dispensaries were being managed by local bodies while 2.7% dispensaries were being managed by others.

Ayurveda dispensaries prevailed in 33 states and union territories with maximum of 25.6% dispensaries in Rajasthan, whereas states of Manipur and Mizoram were devoid of Ayurveda dispensaries as on 1.4.2007. Homoeopathy dispensaries existed in 32 States and union territories with maximum of 26.1% dispensaries in Uttar Pradesh, whereas states and union territories of Jammu & Kashmir, Maharashtra and Daman & Diu had not reported any Homoeopathy dispensaries. Maximum of 23.5% of total Unani dispensaries existed in the state of Jammu & Kashmir. No Unani dispensary existed in the states of Goa, Gujarat, all the North-Eastern states except Assam and all the union territories. In case of Siddha, dispensaries existed in the states of Kerala, Tamil Nadu and in the union territory of Puducherry with 95.4% dispensaries existing in Tamilnadu only. Yoga dispensaries were prevailing in the states of Arunachal Pradesh, Assam, Delhi, Gujarat, Orissa, Punjab and Tamil Nadu. Maximum of 51.5% Yoga dispensaries existed in Orissa. Naturopathy dispensaries existed in 21 states and union territories with maximum of 15.1% dispensaries existing in Andhra Pradesh. Amchi dispensaries existed in 14 states and union territories with maximum of 63.1% dispensaries in Jammu & Kashmir.



An average annual growth rate of 1.5% has been realised in AYUSH dispensaries during 1980 to 2007. Maximum annual growth of 27.3% was registered in AYUSH dispensaries in 1986. Average annual growth rates of 0.7%, 0.2%, 0.8%, 15.5%, 21.2%, 4.8% and 5.2% had been observed in the dispensaries of Ayurveda, Unani, Siddha, Yoga, Naturopathy, Homoeopathy and Amchi respectively. Maximum annual growth of 9.1%, 10.9%, 28.3% and 75% in Ayurveda, Unani, Siddha and Amchi dispensaries were registered in the years 1985, 1987, 1988 and 2003 respectively. Yoga dispensaries incremented five-fold while Naturopathy dispensaries about four times in the year 1997, whereas Homoeopathy dispensaries doubled in the year 1986 over their preceding years.

Except 2.26% dispensaries under the control of 'CGHS & Central Government Organizations', there were 21278 dispensaries in India as on 1.4.2007, which come under the purview of State Governments and Union Territories. Out of which, 17.7% dispensaries were in Rajasthan providing medical facilities to 5.6% population of India. However, only 8.8% dispensaries existed in Uttar Pradesh serving 16.6% population. Besides these two states, the states having higher or equivalent proportion of dispensaries to the population were Arunachal Pradesh, Chhattisgarh, Goa, Haryana, Himachal Pradesh, Jammu & Kashmir, Kerala, Madhya Pradesh, Orissa, Punjab, Tripura, Uttarakhand, Andaman & Nicobar Islands, Chandigarh and Puducherry. States and union territories with scant (less than 15) AYUSH dispensaries were Manipur, Mizoram, Nagaland, Sikkim, Chandigarh, Dadra & Nagar Haveli, Daman & Diu and Lakshadweep.

The average number of AYUSH dispensaries was 188.1 per crore population in the country as on 1.4.2007. On an average, states and union territories having more than 250 dispensaries per crore population were Arunachal Pradesh, Chhattisgarh, Goa, Himachal Pradesh, Jammu & Kashmir, Kerala, Orissa, Rajasthan, Tripura, Uttarakhand, Andaman & Nicobar Islands, Lakshadweep and Puducherry. States having less than 100 dispensaries per crore population were Bihar, Jharkhand, Maharashtra, Manipur, Meghalaya, Mizoram, Nagaland, Sikkim, Tamilnadu and Daman & Diu.



2.1: Summary of AYUSH Medical Care Facilities by Management Status as on 1.4.2007

S. No.	Management	Ayurveda		Unani		Siddha		Yoga		Naturopathy		Homoeopathy		Amchi		Total		% Distribution	
		Hosp.	Disp.	Hosp.	Disp.	Hosp.	Disp.	Hosp.	Disp.	Hosp.	Disp.	Hosp.	Disp.	Hosp.	Disp.	Hosp.	Disp.	Hosp.	Disp.
(1)	(2)	(3)	(4)	(5)	(6)	(7)	(8)	(9)	(10)	(11)	(12)	(13)	(14)	(15)	(16)	(17)	(18)	(19)	(20)

A. Under jurisdiction of States/Union Territories

1	State Govt./ UT Administration	2196	12720	230	955	270	478	4	27	12	15	90	4805	5	2802	19005	83.4%	87.3%
2	Local Bodies	14	880	43				1			8	758			14	1690	0.4%	7.8%
3	Others	167	91	24	4	4		8	40	159	209	140	118	2	504	583	15.0%	2.7%
Total (A)		2377	13691	254	998	274	478	12	68	171	232	230	5681	2	3320	21278	98.8%	97.7%

B. CGHS & Central Government Organizations

1	C.G.H.S.	1	35		11		3		2				37		1	88	0.0%	0.4%
2	Labour Ministry		130				5						32			167		0.8%
3	Ministry of Coal		16													16		0.1%
4	Railway Ministry		39										129			168		0.8%
5	Research Councils	21	1	7	10	2	2			5	3	3	29	1	33	48	1.0%	0.2%
6	National Institutes	3	1	1	1	1				1	1	1	2		6	4	0.2%	0.0%
Total (B)		25	222	8	21	3	10	2	2	6	4	4	229	1	40	491	1.2%	2.3%
All India (A+B)		2402	13913	262	1019	277	488	12	70	171	238	234	5910	2	3360	21769	100%	100%

2.2: State-wise/System-wise Number of AYUSH Hospitals and their Bed Strength as on 1.4.2007

S. No.	States/UTs/ Others	Ayurveda		Unani		Siddha		Yoga		Naturopathy		Homoeopathy		Amchi		Total	
		Hosp.	Beds	Hosp.	Beds	Hosp.	Beds	Hosp.	Beds	Hosp.	Beds	Hosp.	Beds	Hosp.	Beds	Hosp.	Beds
(1)	(2)	(3)	(4)	(5)	(6)	(7)	(8)	(9)	(10)	(11)	(12)	(13)	(14)	(15)	(16)	(17)	(18)
A. States /Union Territories																	
1	Andhra Pradesh	9	604	6	310					18	1038	6	300			39	2252
2	Arunachal Pradesh	1	10					1	10			2	100			4	120
3	Assam	1	100					1	25	3	72	3	105			8	302
4	Bihar	11	1356	4	459			1	100	2	50	11	510			29	2475
5	Chhattisgarh	8	365	1	90					2	40	3	100			14	595
6	Delhi	10	643	2	111			2	65	4	190	2	150			20	1159
7	Goa	1	40							1	12	1	25			3	77
8	Gujarat	48	1855							5	50	16	873			69	2778
9	Haryana	8	835	1	10					7	320	1	50			17	1215
10	Himachal Pradesh	24	420							3	120	1	25	2	32	30	597
11	Jammu & Kashmir	2	155	2	200					1	20					5	375
12	Jharkhand	1	160							1	20	2	82			4	262
13	Karnataka	122	8147	13	402	1	10	4	165	23	1086	20	896			183	10706
14	Kerala	124	3987			2	170			38	1051	33	1130			197	6338
15	Madhya Pradesh	34	1726	2	250					6	185	22	1055			64	3216
16	Maharashtra	55	7871	5	635			2	110	7	250	45	3105			114	11971
17	Manipur									10	205	1	10			11	215
18	Meghalaya	1	10									7	70			8	80
19	Mizoram									1	14					1	14
20	Nagaland											1	10			1	10
21	Orissa	8	488							1	10	6	185			15	683
22	Punjab	15	1434									5	240			20	1674
23	Rajasthan	100	914	3	30			1	20	4	105	9	232			117	1301
24	Sikkim	1	10													1	10
25	Tamil Nadu	7	580	1	54	270	2206			25	444	9	460			312	3744
26	Tripura	1	10									1	10			2	20
27	Uttar Pradesh	1771	10288	210	1716					4	190	8	350			1993	12544
28	Uttarakhand	7	319	2	8					2	110	1	50			12	487
29	West Bengal	4	409	1	100					3	95	12	630			20	1234
30	A & N Islands	1	10	1	5	1	5					1	10			4	30
31	Chandigarh	1	120									1	25			2	145
32	Puducherry	1	10													1	10
Total (A)		2377	42876	254	4380	274	2391	12	495	171	5677	230	10788	2	32	3320	66639
B. CGHS & Central Government organizations		25	875	8	291	3	205					4	145			40	1516
TOTAL (A+B)		2402	43751	262	4671	277	2596	12	495	171	5677	234	10933	2	32	3360	68155
System-wise % distribution		71.5%	64.2%	7.8%	6.9%	8.2%	3.8%	0.4%	0.7%	5.1%	8.3%	7.0%	16.0%	0.1%	0.0%	100%	100%
System-wise average number of beds per hospital		18.2		17.8		9.4		41.3		33.2		46.7		16.0		20.3	

2.2(a) : System-wise Percent Distribution of AYUSH Hospitals and their Bed Strength in States/Union Territories as on 1.4.2007

S. No.	States/UTs	Ayurveda		Unani		Siddha		Yoga		Naturopathy		Homoeopathy		Total	
		Hosp.	Beds	Hosp.	Beds	Hosp.	Beds	Hosp.	Beds	Hosp.	Beds	Hosp.	Beds	Hosp.	Beds
(1)	(2)	(3)	(4)	(5)	(6)	(7)	(8)	(9)	(10)	(11)	(12)	(13)	(14)	(15)	(16)
1	Andhra Pradesh	0.4%	1.4%	2.4%	7.1%					10.5%	18.3%	2.6%	2.8%	1.2%	3.4%
2	Arunachal Pradesh	0.0%	0.0%					8.3%	2.0%			0.9%	0.9%	0.1%	0.2%
3	Assam	0.0%	0.2%					8.3%	5.1%	1.8%	1.3%	1.3%	1.0%	0.2%	0.5%
4	Bihar	0.5%	3.2%	1.6%	10.5%			8.3%	20.2%	1.2%	0.9%	4.8%	4.7%	0.9%	3.7%
5	Chhattisgarh	0.3%	0.9%	0.4%	2.1%					1.2%	0.7%	1.3%	0.9%	0.4%	0.9%
6	Delhi	0.4%	1.5%	0.8%	2.5%			16.7%	13.1%	2.3%	3.3%	0.9%	1.4%	0.6%	1.7%
7	Goa	0.0%	0.1%							0.6%	0.2%	0.4%	0.2%	0.1%	0.1%
8	Gujarat	2.0%	4.3%							2.9%	0.9%	7.0%	8.1%	2.1%	4.2%
9	Haryana	0.3%	1.9%	0.4%	0.2%					4.1%	5.6%	0.4%	0.5%	0.5%	1.8%
10	Himachal Pradesh	1.0%	1.0%							1.8%	2.1%	0.4%	0.2%	0.9%	0.9%
11	Jammu & Kashmir	0.1%	0.4%	0.8%	4.6%					0.6%	0.4%			0.2%	0.6%
12	Jharkhand	0.0%	0.4%							0.6%	0.4%	0.9%	0.8%	0.1%	0.4%
13	Karnataka	5.1%	19.0%	5.1%	9.2%	0.4%	0.4%	33.3%	33.3%	13.5%	19.1%	8.7%	8.3%	5.5%	16.1%
14	Kerala	5.2%	9.3%			0.7%	7.1%			22.2%	18.5%	14.3%	10.5%	5.9%	9.5%
15	Madhya Pradesh	1.4%	4.0%	0.8%	5.7%					3.5%	3.3%	9.6%	9.8%	1.9%	4.8%
16	Maharashtra	2.3%	18.4%	2.0%	14.5%			16.7%	22.2%	4.1%	4.4%	19.6%	28.8%	3.4%	18.0%
17	Manipur									5.8%	3.6%	0.4%	0.1%	0.3%	0.3%
18	Meghalaya	0.0%	0.0%									3.0%	0.6%	0.2%	0.1%
19	Mizoram									0.6%	0.2%			0.0%	0.0%
20	Nagaland											0.4%	0.1%	0.0%	0.0%
21	Orissa	0.3%	1.1%							0.6%	0.2%	2.6%	1.7%	0.5%	1.0%
22	Punjab	0.6%	3.3%									2.2%	2.2%	0.6%	2.5%
23	Rajasthan	4.2%	2.1%	1.2%	0.7%			8.3%	4.0%	2.3%	1.8%	3.9%	2.2%	3.5%	2.0%
24	Sikkim	0.0%	0.0%											0.0%	0.0%
25	Tamil Nadu	0.3%	1.4%	0.4%	1.2%	98.5%	92.3%			14.6%	7.8%	3.9%	4.3%	9.4%	5.6%
26	Tripura	0.0%	0.0%									0.4%	0.1%	0.1%	0.0%
27	Uttar Pradesh	74.5%	24.0%	82.7%	39.2%					2.3%	3.3%	3.5%	3.2%	60.0%	18.8%
28	Uttarakhand	0.3%	0.7%	0.8%	0.2%					1.2%	1.9%	0.4%	0.5%	0.4%	0.7%
29	West Bengal	0.2%	1.0%	0.4%	2.3%					1.8%	1.7%	5.2%	5.8%	0.6%	1.9%
30	A & N Islands	0.0%	0.0%	0.4%	0.1%	0.4%	0.2%					0.4%	0.1%	0.1%	0.0%
31	Chandigarh	0.0%	0.3%									0.4%	0.2%	0.1%	0.2%
32	Puducherry	0.0%	0.0%											0.0%	0.0%

Note : The above table does not include dispensaries under CGHS and Central Government organizations.

2.3: State-wise / System-wise Number of AYUSH Dispensaries as on 1.4.2007

S. No	States / UTs / Others	Ayurveda	Unani	Siddha	Yoga	Naturopathy	Homoeopathy	Amchi	Total
(1)	(2)	(3)	(4)	(5)	(6)	(7)	(8)	(9)	(10)
A. States /Union Territories									
1	Andhra Pradesh	557	196			35	286		1074
2	Arunachal Pradesh	2			1		44	6	53
3	Assam	380	1		25	2	75		483
4	Bihar	311	144				179		634
5	Chhattisgarh	634	6			5	52	1	698
6	Delhi	148	25		4	10	98	4	289
7	Goa	77				2	59		138
8	Gujarat	501			1	13	216	1	732
9	Haryana	472	19			2	20		513
10	Himachal Pradesh	1105	3				14	12	1134
11	Jammu & Kashmir	273	235					82	590
12	Jharkhand	122	30				54		206
13	Karnataka	589	51			32	42	7	721
14	Kerala	740	1	6		20	580		1347
15	Madhya Pradesh	1427	50			9	146		1632
16	Maharashtra	469	25			10		2	506
17	Manipur					2	9		11
18	Meghalaya	12					10	1	23
19	Mizoram						1		1
20	Nagaland	6				1	7		14
21	Orissa	624	9		35	30	603	2	1303
22	Punjab	507	35		1	5	107		655
23	Rajasthan	3509	92			11	148		3760
24	Sikkim	1					1	3	5
25	Tamil Nadu	35	21	456	1	26	46		585
26	Tripura	55					93		148
27	Uttar Pradesh	340	49			6	1482	1	1878
28	Uttarakhand	467	3			3	60	3	536
29	West Bengal	295	3			5	1220	5	1528
30	A & N Islands	5					15		20
31	Chandigarh	6					5		11
32	D & N Haveli	3					1		4
33	Daman & Diu	1							1
34	Lakshadweep	2					1		3
35	Puducherry	16		16		3	7		42
Total (A)		13691	998	478	68	232	5681	130	21278
B. CGHS & Central Government organizations		222	21	10	2	6	229	1	491
TOTAL (A+B)		13913	1019	488	70	238	5910	131	21769
System-wise % distribution		63.9%	4.7%	2.2%	0.3%	1.1%	27.1%	0.6%	100%

**2.3(a) : System-wise Percentage Distribution of AYUSH Dispensaries
in States / Union Territories as on 1.4.2007**

S. No	States/UTs	Ayurveda	Unani	Siddha	Yoga	Naturopathy	Homoeopathy	Amchi	Total
(1)	(2)	(3)	(4)	(5)	(6)	(7)	(8)	(9)	(10)
1	Andhra Pradesh	4.1%	19.6%			15.1%	5.0%		5.0%
2	Arunachal Pradesh	0.0%			1.5%		0.8%	4.6%	0.2%
3	Assam	2.8%	0.1%		36.8%	0.9%	1.3%		2.3%
4	Bihar	2.3%	14.4%				3.2%		3.0%
5	Chhattisgarh	4.6%	0.6%			2.2%	0.9%	0.8%	3.3%
6	Delhi	1.1%	2.5%		5.9%	4.3%	1.7%	3.1%	1.4%
7	Goa	0.6%				0.9%	1.0%		0.6%
8	Gujarat	3.7%			1.5%	5.6%	3.8%	0.8%	3.4%
9	Haryana	3.4%	1.9%			0.9%	0.4%		2.4%
10	Himachal Pradesh	8.1%	0.3%				0.2%	9.2%	5.3%
11	Jammu & Kashmir	2.0%	23.5%					63.1%	2.8%
12	Jharkhand	0.9%	3.0%				1.0%		1.0%
13	Karnataka	4.3%	5.1%			13.8%	0.7%	5.4%	3.4%
14	Kerala	5.4%	0.1%	1.3%		8.6%	10.2%		6.3%
15	Madhya Pradesh	10.4%	5.0%			3.9%	2.6%		7.7%
16	Maharashtra	3.4%	2.5%			4.3%		1.5%	2.4%
17	Manipur					0.9%	0.2%		0.1%
18	Meghalaya	0.1%					0.2%	0.8%	0.1%
19	Mizoram						0.0%		0.0%
20	Nagaland	0.0%				0.4%	0.1%		0.1%
21	Orissa	4.6%	0.9%		51.5%	12.9%	10.6%	1.5%	6.1%
22	Punjab	3.7%	3.5%		1.5%	2.2%	1.9%		3.1%
23	Rajasthan	25.6%	9.2%			4.7%	2.6%		17.7%
24	Sikkim	0.0%					0.0%	2.3%	0.0%
25	Tamil Nadu	0.3%	2.1%	95.4%	1.5%	11.2%	0.8%		2.7%
26	Tripura	0.4%					1.6%		0.7%
27	Uttar Pradesh	2.5%	4.9%			2.6%	26.1%	0.8%	8.8%
28	Uttarakhand	3.4%	0.3%			1.3%	1.1%	2.3%	2.5%
29	West Bengal	2.2%	0.3%			2.2%	21.5%	3.8%	7.2%
30	A & N Islands	0.0%					0.3%		0.1%
31	Chandigarh	0.0%					0.1%		0.1%
32	D & N Haveli	0.0%					0.0%		0.0%
33	Daman & Diu	0.0%							0.0%
34	Lakshadweep	0.0%					0.0%		0.0%
35	Puducherry	0.1%		3.3%		1.3%	0.1%		0.2%

Note: The above table does not include dispensaries under CGHS and Central Government organizations.

**2.4 : AYUSH medical care facilities and population served
in States/Union Territories as on 1.4.2007**

S. No.	States/UTs/ Others	Projected Population as on 1.3. 2007 (in 000) #	Number of Hospitals, Beds and Dispensaries			% Distribution				Average number of availability per one crore population			Average Number of Beds per Hospital
			Hosp.	Beds	Disp.	Pop ^a	Hosp.	Beds	Disp.	Hosp.	Beds	Disp.	
(1)	(2)	(3)	(4)	(5)	(6)	(7)	(8)	(9)	(10)	(11)	(12)	(13)	(14)
1	Andhra Pradesh	81,315	39	2252	1074	7.2%	1.2%	3.4%	5.0%	4.8	276.9	132.1	57.7
2	Arunachal Pradesh	1,185	4	120	53	0.1%	0.1%	0.2%	0.2%	33.8	1012.7	447.3	30.0
3	Assam	29,471	8	302	483	2.6%	0.2%	0.5%	2.3%	2.7	102.5	163.9	37.8
4	Bihar	92,340	29	2475	634	8.2%	0.9%	3.7%	3.0%	3.1	268.0	68.7	85.3
5	Chhattisgarh	23,255	14	595	698	2.1%	0.4%	0.9%	3.3%	6.0	255.9	300.2	42.5
6	Delhi	16,563	20	1159	289	1.5%	0.6%	1.7%	1.4%	12.1	699.8	174.5	58.0
7	Goa	1,581	3	77	138	0.1%	0.1%	0.1%	0.6%	19.0	487.0	872.9	25.7
8	Gujarat	55,617	69	2778	732	4.9%	2.1%	4.2%	3.4%	12.4	499.5	131.6	40.3
9	Haryana	23,410	17	1215	513	2.1%	0.5%	1.8%	2.4%	7.3	519.0	219.1	71.5
10	Himachal Pradesh	6,488	30	597	1134	0.6%	0.9%	0.9%	5.3%	46.2	920.2	1747.8	19.9
11	Jammu & Kashmir	11,974	5	375	590	1.1%	0.2%	0.6%	2.8%	4.2	313.2	492.7	75.0
12	Jharkhand	29,597	4	262	206	2.6%	0.1%	0.4%	1.0%	1.4	88.5	69.6	65.5
13	Karnataka	56,775	183	10706	721	5.0%	5.5%	16.1%	3.4%	32.2	1885.7	127.0	58.5
14	Kerala	33,902	197	6338	1347	3.0%	5.9%	9.5%	6.3%	58.1	1869.5	397.3	32.2
15	Madhya Pradesh	68,046	64	3216	1632	6.0%	1.9%	4.8%	7.7%	9.4	472.6	239.8	50.3
16	Maharashtra	105,511	114	11971	506	9.3%	3.4%	18.0%	2.4%	10.8	1134.6	48.0	105.0
17	Manipur	2,594	11	215	11	0.2%	0.3%	0.3%	0.1%	42.4	828.8	42.4	19.5
18	Meghalaya	2,504	8	80	23	0.2%	0.2%	0.1%	0.1%	31.9	319.5	91.9	10.0
19	Mizoram	968	1	14	1	0.1%	0.0%	0.0%	0.0%	10.3	144.6	10.3	14.0
20	Nagaland	2,160	1	10	14	0.2%	0.0%	0.0%	0.1%	4.6	46.3	64.8	10.0
21	Orissa	39,483	15	683	1303	3.5%	0.5%	1.0%	6.1%	3.8	173.0	330.0	45.5
22	Punjab	26,288	20	1674	655	2.3%	0.6%	2.5%	3.1%	7.6	636.8	249.2	83.7
23	Rajasthan	63,549	117	1301	3760	5.6%	3.5%	2.0%	17.7%	18.4	204.7	591.7	11.1
24	Sikkim	587	1	10	5	0.1%	0.0%	0.0%	0.0%	17.0	170.4	85.2	10.0
25	Tamil Nadu	65,838	312	3744	585	5.8%	9.4%	5.6%	2.7%	47.4	568.7	88.9	12.0
26	Tripura	3,466	2	20	148	0.3%	0.1%	0.0%	0.7%	5.8	57.7	427.0	10.0
27	Uttar Pradesh	187,380	1993	12544	1878	16.6%	60.0%	18.8%	8.8%	106.4	669.4	100.2	6.3
28	Uttarakhand	9,358	12	487	536	0.8%	0.4%	0.7%	2.5%	12.8	520.4	572.8	40.6
29	West Bengal	86,835	20	1234	1528	7.7%	0.6%	1.9%	7.2%	2.3	142.1	176.0	61.7
30	A & N Islands	403	4	30	20	0.0%	0.1%	0.0%	0.1%	99.3	744.4	496.3	7.5
31	Chandigarh	1,037	2	145	11	0.1%	0.1%	0.2%	0.1%	19.3	1398.3	106.1	72.5
32	D & N Haveli	255			4	0.0%			0.0%			156.9	
33	Daman & Diu	183			1	0.0%			0.0%			54.6	
34	Lakshadweep	67			3	0.0%			0.0%			447.8	
35	Puducherry	1,058	1	10	42	0.1%	0.0%	0.0%	0.2%	9.5	94.5	397.0	10.0
	Total	1,131,043	3320	66639	21278	100%	100%	100%	100%	29.4	589.2	188.1	20.1

Note: the above table dose not include dispensaries under CGHS and Central Government organizations.

Source : Registrar General of India

2.5: State-wise Distribution of AYUSH Hospitals, Beds and Dispensaries by Management Status as on 1.4.2007

S. No.	States / UTs	Number of Hospitals			Number of Beds			Number of Dispensaries			Total (14)		
		Govt. (3)	Local Body (4)	Others (5)	Total (6)	Govt. (7)	Local Body (8)	Others (9)	Total (10)	Govt. (11)		Local Body (12)	Others (13)
A. States/UTs													
1	Andhra Pradesh	19		20	39	1022		1230	2252	1039		35	1074
2	Arunachal Pradesh	2		2	4	60		60	120	46		7	53
3	Assam	4		4	8	205		97	302	483			483
4	Bihar	8		21	29	430		2045	2475	634			634
5	Chhattisgarh	7		7	14	290		305	595	692		6	698
6	Delhi	4		13	20	300	148	711	1159	83	176	30	289
7	Goa	1		2	3	40		37	77	14		124	138
8	Gujarat	32	11	26	69	1121	89	1568	2778	483	243	6	732
9	Haryana	4		13	17	145		1070	1215	511		2	513
10	Himachal Pradesh	25		5	30	430		167	597	1126		8	1134
11	Jammu & Kashmir	1		4	5	25		350	375	508		82	590
12	Jharkhand			4	4			262	262	206			206
13	Karnataka	104		79	183	1555		9151	10706	640	49	32	721
14	Kerala	149		48	197	3754		2584	6338	1272	20	55	1347
15	Madhya Pradesh	31		33	64	990		2226	3216	1623		9	1632
16	Maharashtra	6		108	114	685		11286	11971		494	12	506
17	Manipur	1		10	11	10		205	215	10		1	11
18	Meghalaya	8			8	80			80	22		1	23
19	Mizoram			1	1			14	14	1			1
20	Nagaland	1			1	10			10	14			14
21	Orissa	9		6	15	363		320	683	1188	29	86	1303
22	Punjab	6		14	20	60		1614	1674	650		5	655
23	Rajasthan	107		10	117	971		330	1301	3738		22	3760
24	Sikkim	1			1	10			10	3		2	5
25	Tamil Nadu	270		42	312	2035		1709	3744	560		25	585
26	Tripura	2		0	2	20			20	148			148
27	Uttar Pradesh	1979		14	1993	11315		1229	12544	1871		7	1878
28	Uttarakhand	9		3	12	327		160	487	530		6	536
29	West Bengal	7		13	20	509		725	1234	843	675	10	1528
30	A & N Islands	4			4	30			30	9	4	7	20
31	Chandigarh			2	2			145	145	11			11
32	D & N Haveli									4			4
33	Daman & Diu									1			1
34	Lakshadweep									3			3
35	Puducherry	1			1	10			10	39		3	42
Total (A)		2802	14	504	3320	26802	237	39600	66639	19005	1690	583	21278
B. CGHS & Central Government Organizations		40			40	1516			1516	491			491
TOTAL (A+B)		2842	14	504	3360	28318	237	39600	68155	19496	1690	583	21769
% Distribution by Management		84.6%	0.4%	15.0%	100%	41.5%	0.3%	58.1%	100%	89.6%	7.8%	2.7%	100%

2.5(a): State-wise Distribution of Hospitals, Beds and Dispensaries in Ayurveda by Management Status as on 1.4.2007

S. No.	States / UTs	Number of Hospitals			Number of Beds			Number of Dispensaries					
		Govt. (3)	Local Body (4)	Others (5)	Total (6)	Govt. (7)	Local Body (8)	Others (9)	Total (10)	Govt. (11)	Local Body (12)	Others (13)	Total (14)
A. States/UTs													
1	Andhra Pradesh	7		2	9	384		220	604	557			557
2	Arunachal Pradesh	1			1	10			10	2			2
3	Assam	1			1	100			100	380			380
4	Bihar	5		6	11	336		1020	1356	311			311
5	Chhattisgarh	7		1	8	290		75	365	634			634
6	Delhi	1	3	6	10	75	148	420	643	17	121	10	148
7	Goa	1			1	40			40	11		66	77
8	Gujarat	29	11	8	48	1121	89	645	1855	267	234		501
9	Haryana	3		5	8	135		700	835	472			472
10	Himachal Pradesh	24			24	420			420	1105			1105
11	Jammu & Kashmir	1		1	2	25		130	155	273			273
12	Jharkhand			1	1			160	160	122			122
13	Karnataka	76		46	122	1167		6980	8147	540	49		589
14	Kerala	115		9	124	2714		1273	3987	740			740
15	Madhya Pradesh	27		7	34	870		856	1726	1427			1427
16	Maharashtra	5		50	55	655		7216	7871		469		469
17	Meghalaya	1			1	10			10	12			12
18	Nagaland									6			6
19	Orissa	5		3	8	238		250	488	619	3	2	624
20	Punjab	5		10	15	50		1384	1434	507			507
21	Rajasthan	99		1	100	889		25	914	3496		13	3509
22	Sikkim	1			1	10			10	1			1
23	Tamil Nadu	1		6	7	55		525	580	35			35
24	Tripura	1			1	10			10	55			55
25	Uttar Pradesh	1768		3	1771	10008		280	10288	340			340
26	Uttarakhand	7			7	319			319	467			467
27	West Bengal	3		1	4	309		100	409	295			295
28	A&N Islands	1			1	10			10	1	4		5
29	Chandigarh			1	1			120	120	6			6
30	D & N Haveli									3			3
31	Daman & Diu									1			1
32	Lakshadweep									2			2
33	Puducherry	1			1	10			10	16			16
Total (A)		2196	14	167	2377	20260	237	22379	42876	12720	880	91	13691
B. CGHS & Central Government Organizations		25			25	875			875	222			222
TOTAL (A+B)		2221	14	167	2402	21135	237	22379	43751	12942	880	91	13913
% Distribution by Management		92.5%	0.6%	7.0%	100%	48.3%	0.5%	51.2%	100%	93.0%	6.3%	0.7%	100%

Note: Figures of Hospitals/Beds under 'Others' include hospitals/beds attached to Non-Government Ayurvedic Medical Colleges.

Source : State Governments & concerned agencies.

2.5(b): State-wise Distribution of Hospitals, Beds and Dispensaries in Unani by Management Status as on 1.4.2007

S. No.	States / UTs	Number of Hospitals			Number of Beds			Number of Dispensaries					
		Govt. (3)	Local Body (4)	Others (5)	Total (6)	Govt. (7)	Local Body (8)	Others (9)	Total (10)	Govt. (11)	Local Body (12)	Others (13)	Total (14)
A. States/UTs													
1	Andhra Pradesh	5		1	6	210		100	310	196			196
2	Assam									1			1
3	Bihar	1		3	4	24		435	459	144			144
4	Chhattisgarh			1	1			90	90	6			6
5	Delhi	1		1	2	75		36	111	7	18		25
6	Haryana	1			1	10			10	19			19
7	Himachal Pradesh									3			3
8	Jammu & Kashmir			2	2			200	200	235			235
9	Jharkhand									30			30
10	Karnataka	11		2	13	202		200	402	51			51
11	Kerala									1			1
12	Madhya Pradesh			2	2			250	250	50	25		50
13	Maharashtra			5	5			635	635				25
14	Orissa									9			9
15	Punjab									35			35
16	Rajasthan	3			3	30			30	92			92
17	Tamil Nadu	1			1	54			54	21			21
18	Uttar Pradesh	204		6	210	1007		709	1716	49			49
19	Uttarakhand	2			2	8			8	3			3
20	West Bengal			1	1			100	100	3			3
21	A&N Islands	1			1	5			5				
Total (A)		230		24	254	1625		2755	4380	955	43		998
B. CGHS & Central Government Organizations		8			8	291			291	21			21
TOTAL (A+B)		238		24	262	1916		2755	4671	976	43		1019
% Distribution by Management		90.8%		9.2%	100%	41.0%		59.0%	100%	95.8%	4.2%		100%

Note: Figures of Hospitals/Beds under 'Others' include hospitals/beds attached to Non-Government Unani Medical Colleges.

Source : State Governments & concerned agencies

2.5(c): State-wise Distribution of Hospitals, Beds and Dispensaries in Siddha by Management Status as on 1.4.2007

S. No.	States / UTs	Number of Hospitals			Number of Beds			Number of Dispensaries			Total (14)	
		Govt. (3)	Local Body (4)	Others (5)	Total (6)	Govt. (7)	Local Body (8)	Others (9)	Total (10)	Govt. (11)		Local Body (12)
A. States/UTs												
1	Karnataka	1			1	10			10			
2	Kerala	1		1	2	20	150		170	6		6
3	Tamil Nadu	267		3	270	1876	330		2206	456		456
4	A&N Islands	1			1	5			5			
5	Puducherry									16		16
	Total (A)	270		4	274	1911	480		2391	478		478
B. CGHS & Central Government Organizations												
		3			3	205			205	10		10
	TOTAL (A+B)	273		4	277	2116	480		2596	488		488
	% Distribution by Management	98.6%		1.4%	100%	81.5%		18.5%	100%	100%		100%

Note: Figures of Hospitals/Beds under 'Others' include hospitals/beds attached to Non-Government Siddha Medical Colleges.

Source : State Governments & concerned agencies

2.5(d): State-wise Distribution of Hospitals, Beds and Dispensaries in Yoga by Management Status as on 1.4.2007

S. No.	States / UTs	Number of Hospitals			Number of Beds			Number of Dispensaries					
		Govt. (3)	Local Body (4)	Others (5)	Total (6)	Govt. (7)	Local Body (8)	Others (9)	Total (10)	Govt. (11)	Local Body (12)	Others (13)	Total (14)
A. States/UTs													
1	Arunachal Pradesh			1	1			10	10			1	1
2	Assam			1	1			25	25	25			25
3	Bihar			1	1			100	100				100
4	Delhi			2	2			65	65			4	4
5	Gujarat										1		1
6	Karnataka	3		1	4	15		150	165				165
7	Maharashtra			2	2			110	110				110
8	Orissa											35	35
9	Punjab									1			1
10	Rajasthan	1			1	20			20				20
11	Tamil Nadu									1			1
	Total (A)	4		8	12	35		460	495	27	1	40	68
B. CGHS & Central Government Organizations										2			2
	TOTAL (A+B)	4		8	12	35		460	495	29	1	40	70
% Distribution by Management		33.3%		66.7%	100%	7.1%		92.9%	100%	41.4%	1.4%	57.1%	100%

Source : State Governments & concerned agencies

2.5(e): State-wise Distribution of Hospitals, Beds and Dispensaries in Naturopathy by Management Status as on 1.4.2007

S. No. (1)	States / UTs (2)	Number of Hospitals			Number of Beds			Number of Dispensaries						
		Govt. (3)	Local Body (4)	Others (5)	Total (6)	Govt. (7)	Local Body (8)	Others (9)	Total (10)	Govt. (11)	Local Body (12)	Others (13)	Total (14)	
A. States/UTs														
1	Andhra Pradesh	1		17	18	128			910	1038			35	35
2	Assam			3	3				72	72	2			2
3	Bihar			2	2				50	50				
4	Chhattisgarh			2	2				40	40			5	5
5	Delhi			4	4				190	190			10	10
6	Goa			1	1				12	12			2	2
7	Gujarat	3		2	5				50	50		8	5	13
8	Haryana			7	7				320	320			2	2
9	Himachal Pradesh	1		2	3	10			110	120				
10	Jammu and Kashmir			1	1				20	20				
11	Jharkhand			1	1				20	20				
12	Karnataka	3		20	23	26			1060	1086	7		25	32
13	Kerala	2		36	38	50			1001	1051			20	20
14	Madhya Pradesh			6	6				185	185			9	9
15	Maharashtra			7	7				250	250			10	10
16	Manipur			10	10				205	205	1		1	2
17	Mizoram			1	1				14	14				
18	Nagaland										1			1
19	Orissa			1	1				10	10			30	30
20	Punjab												5	5
21	Rajasthan	2		2	4	22			83	105	3		8	11
22	Tamil Nadu			25	25				444	444	1		25	26
23	Uttar Pradesh			4	4				190	190			6	6
24	Uttarakhand			2	2				110	110			3	3
25	West Bengal			3	3				95	95			5	5
26	Puducherry												3	3
Total (A)		12		159	171	236			5441	5677	15	8	209	232
B. CGHS & Central Government Organizations											6			6
TOTAL (A+B)		12		159	171	236			5441	5677	21	8	209	238
% Distribution by Management		7.0%		93.0%	100%	4.2%			95.8%	100%	8.8%	3.4%	87.8%	100%

Source : State Governments & concerned agencies

2.5(f): State-wise Distribution of Hospitals, Beds and Dispensaries in Homoeopathy by Management Status as on 1.4.2007

S. No.	States / UTs	Number of Hospitals			Number of Beds			Number of Dispensaries			Total (14)		
		Govt. (3)	Local Body (4)	Others (5)	Total (6)	Govt. (7)	Local Body (8)	Others (9)	Total (10)	Govt. (11)		Local Body (12)	Others (13)
A. States/UTs													
1	Andhra Pradesh	6			6	300			300	286			286
2	Arunachal Pradesh	1		1	2	50		50	100	44			44
3	Assam	3			3	105			105	75			75
4	Bihar	2		9	11	70		440	510	179			179
5	Chhattisgarh			3	3			100	100	52			52
6	Delhi	2			2	150			150	59	37	2	98
7	Goa			1	1			25	25	3		56	59
8	Gujarat			16	16			873	873	216			216
9	Haryana			1	1			50	50	20			20
10	Himachal Pradesh			1	1			25	25	14			14
11	Jharkhand			2	2			82	82	54			54
12	Karnataka			10	20	135		761	896	42			42
13	Kerala	31		2	33	970		160	1130	525	20	35	580
14	Madhya Pradesh	4		18	22	120		935	1055	146			146
15	Maharashtra	1		44	45	30		3075	3105				
16	Manipur	1			1	10			10	9			9
17	Meghalaya	7			7	70			70	10			10
18	Mizoram									1			1
19	Nagaland	1			1	10			10	7			7
20	Orissa	4		2	6	125		60	185	560	26	17	603
21	Punjab	1		4	5	10		230	240	107			107
22	Rajasthan	2		7	9	10		222	232	147		1	148
23	Sikkim									1			1
24	Tamil Nadu	1		8	9	50		410	460	46			46
25	Tripura	1			1	10			10	93			93
26	Uttar Pradesh	7		1	8	300		50	350	1482			1482
27	Uttarakhand			1	1			50	50	60			60
28	West Bengal	4		8	12	200		430	630	545	675	7	1220
29	A&N Islands	1			1	10			10	8			15
30	Chandigarh			1	1			25	25	5			5
31	D & N Haveli									1			1
32	Lakshadweep									1			1
33	Puducherry									7			7
Total (A)		90		140	230	2735		8053	10788	4805	758	118	5681
B. CGHS & Central Government Organizations		4			4	145			145	229			229
TOTAL (A+B)		94		140	234	2880		8053	10933	5034	758	118	5910
% Distribution by Management		40.2%		59.8%	100%	26.3%		73.7%	100%	85.2%	12.8%	2.0%	100%

Note: Figures of Hospitals/Beds under 'Others' include hospitals/beds attached to Non-Government Homoeopathy Medical Colleges.
Source : State Governments & concerned agencies

**2.5(g): State-wise Distribution of Hospitals, Beds and Dispensaries in Amchi (Tibetan system)
by Management Status as on 1.4.2007**

S. No.	States/UTs	Govt			Local			Total			Others under			Total			Number of Beds			Number of Dispensaries		
		(3)	(4)	(5)	(6)	(7)	(8)	(9)	(10)	(11)	(12)	(13)	(14)	(15)	(16)	(17)	(18)	(19)	(20)			
A. States/UTs																						
1	Arumachal Pradesh																					
2	Chhattisgarh																					
3	Delhi																					
4	Gujarat																					
5	Himachal Pradesh			1	1	2	2			22	10	32	32	4								
6	Jammu & Kashmir															80	2	82	82			
7	Karnataka																					
8	Maharashtra																					
9	Meghalaya																					
10	Orissa																					
11	Sikkim													1								
12	Uttar Pradesh																					
13	Uttarakhand																					
14	West Bengal																					
	Sub Total (A)			1	1	2	2			22	10	32	32	5		80	45	125	130			
B. CGHS & Central Government Organizations																						
	TOTAL (A+B)			1	1	2	2			22	10	32	32	6		80	45	125	131			
% Distribution by Management																						
				50%	50%	100%	100%			68.8%	31.3%	100%	100%	4.6%		61.1%	34.4%	95.4%	100%			

Source : State Governments and Tibetan Medical & Astrological Institute, Dharamsala (Himachal Pradesh).

2.6: System-wise Distribution of AYUSH Hospitals since 1980 (as on 1st April)

Year	Population of India (in 000')	AYUSH Systems							
		Ayurveda	Unani	Siddha	Yoga	Naturopathy	Homoeopathy	Amchi	Total
(1)	(2)	(3)	(4)	(5)	(6)	(7)	(8)	(9)	(10)
1980	668434	252	19	74		28	77		450
1981	683331	276	19	76		30	111		512
1982	698483	308	28	105		30	118		589
1983	713914	331	29	105		34	120		619
1984	729618	1452	98	105		38	121		1814
1985	745586	1460	100	105		39	127		1831
1986	761810	1469	101	106		43	129		1848
1987	778280	1496	100	105		46	131		1878
1988	794985	1501	101	105		48	163		1918
1989	811914	1527	109	107		51	205		1999
1990	829052	1530	110	107		55	264		2066
1991	846421	2056	175	108	11	69	276	2	2697
1992	863905	2068	177	115	11	72	278	2	2723
1993	881588	2111	177	115	10	75	287	2	2777
1994	899421	2136	177	115	10	79	288	2	2807
1995	917387	2141	181	119	10	81	311	2	2845
1996	935468	2141	181	119	10	83	312	2	2848
1997	953648	2179	189	151	8	87	240	2	2856
1998	971909	2189	189	204	8	95	243	2	2930
1999	990236	2217	199	224	8	98	297	2	3045
2000	1008613	2931	312	236	8	112	279	2	3880
2001	1028737	2955	312	237	7	123	307	2	3943
2002	1045547	2932	300	236	7	132	300	2	3909
2003	1062388	2253	255	276	8	140	290	2	3224
2004	1079117	2228	256	276	6	152	216	2	3136
2005	1095722	2234	256	276	7	160	223	2	3158
2006	1114202	2394	261	280	8	167	228	2	3340
2007	1131043	2402	262	277	12	171	234	2	3360

Source : Census population for the years 1981, 1991 and 2001; Estimated population for the years 1980, 1982 to 1990 and 1992 to 2000 as per Health Information of India-2005 and projected population for the years 2002 to 2007 by Registrar General India.

2.6(a): System-wise Percentage Distribution of AYUSH Hospitals since 1980

Year	Ayurveda	Unani	Siddha	Yoga	Naturopathy	Homoeopathy	Amchi
(1)	(2)	(3)	(4)	(5)	(6)	(7)	(8)
1980	56.0%	4.2%	16.4%		1.0%	15.0%	
1981	53.9%	3.7%	14.8%		1.1%	21.7%	
1982	52.3%	4.8%	17.8%		1.1%	20.0%	
1983	53.5%	4.7%	17.0%		1.3%	19.4%	
1984	80.0%	5.4%	5.8%		1.4%	6.7%	
1985	79.7%	5.5%	5.7%		1.4%	6.9%	
1986	79.5%	5.5%	5.7%		1.6%	7.0%	
1987	79.7%	5.3%	5.6%		1.7%	7.0%	
1988	78.3%	5.3%	5.5%		1.8%	8.5%	
1989	76.4%	5.5%	5.4%		1.9%	10.3%	
1990	74.1%	5.3%	5.2%		2.0%	12.8%	
1991	76.2%	6.5%	4.0%	0.4%	2.6%	10.2%	0.1%
1992	75.9%	6.5%	4.2%	0.4%	2.6%	10.2%	0.1%
1993	76.0%	6.4%	4.1%	0.4%	2.7%	10.3%	0.1%
1994	76.1%	6.3%	4.1%	0.4%	2.8%	10.3%	0.1%
1995	75.3%	6.4%	4.2%	0.4%	2.8%	10.9%	0.1%
1996	75.2%	6.4%	4.2%	0.4%	2.9%	11.0%	0.1%
1997	76.3%	6.6%	5.3%	0.3%	3.0%	8.4%	0.1%
1998	74.7%	6.5%	7.0%	0.3%	3.2%	8.3%	0.1%
1999	72.8%	6.5%	7.4%	0.3%	3.2%	9.8%	0.1%
2000	75.5%	8.0%	6.1%	0.2%	2.9%	7.2%	0.1%
2001	74.9%	7.9%	6.0%	0.2%	3.1%	7.8%	0.1%
2002	75.0%	7.7%	6.0%	0.2%	3.4%	7.7%	0.1%
2003	69.9%	7.9%	8.6%	0.2%	4.3%	9.0%	0.1%
2004	71.0%	8.2%	8.8%	0.2%	4.8%	6.9%	0.1%
2005	70.7%	8.1%	8.7%	0.2%	5.1%	7.1%	0.1%
2006	71.7%	7.8%	8.4%	0.2%	5.0%	6.8%	0.1%
2007	71.5%	7.8%	8.2%	0.4%	5.1%	7.0%	0.1%

2.6(b): Annual Growth Rates of AYUSH Hospitals since 1980

Year	Population of India	AYUSH Systems						
		Ayurveda	Unani	Siddha	Yoga	Naturopathy	Homoeopathy	Total
(1)	(2)	(3)	(4)	(5)	(6)	(7)	(8)	(9)
1981	2.2%	9.5%	0.0%	2.7%		7.1%	44.2%	13.8%
1982	2.2%	11.6%	47.4%	38.2%		0.0%	6.3%	15.0%
1983	2.2%	7.5%	3.6%	0.0%		13.3%	1.7%	5.1%
1984	2%	339%	238%	0.0%		11.8%	0.8%	193.1%
1985	2.2%	0.6%	2.0%	0.0%		2.6%	5.0%	0.9%
1986	2.2%	0.6%	1.0%	1.0%		10.3%	1.6%	0.9%
1987	2.2%	1.8%	-1.0%	-0.9%		7.0%	1.6%	1.6%
1988	2.1%	0.3%	1.0%	0.0%		4.3%	24.4%	2.1%
1989	2.1%	1.7%	7.9%	1.9%		6.3%	25.8%	4.2%
1990	2.1%	0.2%	0.9%	0.0%		7.8%	28.8%	3.4%
1991	2.1%	34.4%	59.1%	0.9%		25.5%	4.5%	30.5%
1992	2.1%	0.6%	1.1%	6.5%	0.0%	4.3%	0.7%	1.0%
1993	2.0%	2.1%	0.0%	0.0%	-9.1%	4.2%	3.2%	2.0%
1994	2.0%	1.2%	0.0%	0.0%	0.0%	5.3%	0.3%	1.1%
1995	2.0%	0.2%	2.3%	3.5%	0.0%	2.5%	8.0%	1.4%
1996	2.0%	0.0%	0.0%	0.0%	0.0%	2.5%	0.3%	0.1%
1997	1.9%	1.8%	4.4%	26.9%	-20.0%	4.8%	-23.1%	0.3%
1998	1.9%	0.5%	0.0%	35.1%	0.0%	9.2%	1.3%	2.6%
1999	1.9%	1.3%	5.3%	9.8%	0.0%	3.2%	22.2%	3.9%
2000	1.9%	32.2%	56.8%	5.4%	0.0%	14.3%	-6.1%	27.4%
2001	2.0%	0.8%	0.0%	0.4%	-12.5%	9.8%	10.0%	1.6%
2002	1.6%	-0.8%	-3.8%	-0.4%	0.0%	7.3%	-2.3%	-0.9%
2003	1.6%	-23.2%	-15.0%	16.9%	14.3%	6.1%	-3.3%	-17.5%
2004	1.6%	-1.1%	0.4%	0.0%	-25.0%	8.6%	-25.5%	-2.7%
2005	1.5%	0.3%	0.0%	0.0%	16.7%	5.3%	3.2%	0.7%
2006	1.7%	7.2%	2.0%	1.4%	14.3%	4.4%	2.2%	5.8%
2007	1.5%	0.3%	0.4%	-1.1%	50.0%	2.4%	2.6%	0.6%
Average Annual Growth Rate	2.0%	8.7%	10.2%	5.0%	0.5%	6.9%	4.2%	7.7%

2.6(c): Average Number of Hospitals per crore Population since 1980

Year	Ayurveda	Unani	Siddha	Yoga	Naturopathy	Homoeopathy	Amchi	Total
(1)	(2)	(3)	(4)	(5)	(6)	(7)	(8)	(9)
1980	37.7	2.8	11.1		4.2	11.3		67.3
1981	40.4	2.8	11.1		4.4	16.2		74.9
1982	44.1	4.0	15.0		4.3	16.9		84.3
1983	46.4	4.1	14.7		4.8	16.8		86.7
1984	199.0	13.4	14.4		5.2	16.6		248.6
1985	195.8	13.4	14.1		5.2	17.0		245.6
1986	192.8	13.3	13.9		5.6	16.9		242.6
1987	192.2	12.8	13.5		5.9	16.8		241.3
1988	188.8	12.7	13.2		6.0	20.5		241.3
1989	188.1	13.4	13.2		6.3	25.2		246.2
1990	184.5	13.3	12.9		6.6	31.8		249.2
1991	242.9	20.7	12.8	1.3	8.2	32.6	0.2	318.6
1992	239.4	20.5	13.3	1.3	8.3	32.2	0.2	315.2
1993	239.5	20.1	13.0	1.1	8.5	32.6	0.2	315.0
1994	237.5	19.7	12.8	1.1	8.8	32.0	0.2	312.1
1995	233.4	19.7	13.0	1.1	8.8	33.9	0.2	310.1
1996	228.9	19.3	12.7	1.1	8.9	33.4	0.2	304.4
1997	228.5	19.8	15.8	0.8	9.1	25.2	0.2	299.5
1998	225.2	19.4	21.0	0.8	9.8	25.0	0.2	301.5
1999	223.9	20.1	22.6	0.8	9.9	30.0	0.2	307.5
2000	290.6	30.9	23.4	0.8	11.1	27.7	0.2	384.7
2001	287.2	30.3	23.0	0.7	12.0	29.8	0.2	383.3
2002	280.4	28.7	22.6	0.7	12.6	28.7	0.2	373.9
2003	212.1	24.0	26.0	0.8	13.2	27.3	0.2	303.5
2004	206.5	23.7	25.6	0.6	14.1	20.0	0.2	290.6
2005	203.9	23.4	25.2	0.6	14.6	20.4	0.2	288.2
2006	214.9	23.4	25.1	0.7	15.0	20.5	0.2	299.8
2007	212.4	23.2	24.5	1.1	15.1	20.7	0.2	297.1

**2.7 : System-wise Distribution of Bed strength of AYUSH Hospitals since 1991
(as on 1st April)**

Year	Population (in 000')	Ayurveda	Unani	Siddha	Yoga	Naturopathy	Homoeopathy	Amchi	Total
(1)	(2)	(3)	(4)	(5)	(6)	(7)	(8)	(9)	(10)
1991	846421	23742	2974	1201	135	2795	6397	25	37269
1992	863905	24103	2990	1241	135	2860	6472	25	37826
1993	881588	24838	2885	1241	120	2920	6632	25	38661
1994	899421	27602	2925	1241	131	2995	7124	25	42043
1995	917387	27666	2988	1282	131	3045	7694	25	42831
1996	935468	30653	3596	1636	201	3085	9288	25	48484
1997	953648	33015	4157	1416	201	3218	9296	25	51328
1998	971909	33145	4157	1681	201	3443	9436	25	52088
1999	990236	33567	4377	1839	201	3859	11553	25	55421
2000	1008613	49120	4838	1871	131	4184	14442	25	74611
2001	1028737	43973	5128	1986	200	4470	13694	25	69476
2002	1045547	43555	5023	1991	150	4712	13593	25	69049
2003	1062388	43803	5031	2386	115	4882	14087	32	70336
2004	1079117	40644	4582	2386	105	5162	10905	32	63816
2005	1095722	41185	4502	2386	105	5454	11205	32	64869
2006	1114202	42838	4489	2401	135	5559	10671	32	66125
2007	1131043	43751	4671	2596	495	5677	10933	32	68155

Source : AYUSH IN INDIA-1992, 1993, 1994, 1998, 2001, 2003 and 2005; Planning Commission Report for 1996; Annual Report 2000-01 for year 2000; State Governments for the years 2004, 2006 and 2007; Central Council for Research in Yoga & Naturopathy (CCRYN)."

Note : Figures for the years 1995 and 1999 have been estimated .

2.7(a): System-wise Percentage Distribution of Bed Strength since 1991

Year	Ayurveda	Unani	Siddha	Yoga	Naturopathy	Homoeopathy	Amchi
(1)	(2)	(3)	(4)	(5)	(6)	(7)	(8)
1991	63.7%	8.0%	3.2%	0.4%	7.5%	17.2%	0.1%
1992	63.7%	7.9%	3.3%	0.4%	7.6%	17.1%	0.1%
1993	64.2%	7.5%	3.2%	0.3%	7.6%	17.2%	0.1%
1994	65.7%	7.0%	3.0%	0.3%	7.1%	16.9%	0.1%
1995	64.6%	7.0%	3.0%	0.3%	7.1%	18.0%	0.1%
1996	63.2%	7.4%	3.4%	0.4%	6.4%	19.2%	0.1%
1997	64.3%	8.1%	2.8%	0.4%	6.3%	18.1%	0.0%
1998	63.6%	8.0%	3.2%	0.4%	6.6%	18.1%	0.0%
1999	60.6%	7.9%	3.3%	0.4%	7.0%	20.8%	0.0%
2000	65.8%	6.5%	2.5%	0.2%	5.6%	19.4%	0.0%
2001	63.3%	7.4%	2.9%	0.3%	6.4%	19.7%	0.0%
2002	63.1%	7.3%	2.9%	0.2%	6.8%	19.7%	0.0%
2003	62.3%	7.2%	3.4%	0.2%	6.9%	20.0%	0.0%
2004	63.7%	7.2%	3.7%	0.2%	8.1%	17.1%	0.1%
2005	63.5%	6.9%	3.7%	0.2%	8.4%	17.3%	0.0%
2006	64.8%	6.8%	3.6%	0.2%	8.4%	16.1%	0.0%
2007	64.2%	6.9%	3.8%	0.7%	8.3%	16.0%	0.0%

2.7(b): System-wise Annual Growth Rate of Bed Strength since 1992

Year	Ayurveda	Unani	Siddha	Yoga	Naturopathy	Homoeopathy	Amchi	Total
(1)	(2)	(3)	(4)	(5)	(6)	(7)	(8)	(9)
1992	1.5%	0.5%	3.3%	0.0%	2.3%	1.2%	0.0%	1.5%
1993	3.0%	-3.5%	0.0%	-11.1%	2.1%	2.5%	0.0%	2.2%
1994	11.1%	1.4%	0.0%	9.2%	2.6%	7.4%	0.0%	8.7%
1995	0.2%	2.2%	3.3%	0.0%	1.7%	8.0%	0.0%	1.9%
1996	10.8%	20.3%	27.6%	53.4%	1.3%	20.7%	0.0%	13.2%
1997	7.7%	15.6%	-13.4%	0.0%	4.3%	0.1%	0.0%	5.9%
1998	0.4%	0.0%	18.7%	0.0%	7.0%	1.5%	0.0%	1.5%
1999	1.3%	5.3%	9.4%	0.0%	12.1%	22.4%	0.0%	6.4%
2000	46.3%	10.5%	1.7%	-34.8%	8.4%	25.0%	0.0%	34.6%
2001	-10.5%	6.0%	6.1%	52.7%	6.8%	-5.2%	0.0%	-6.9%
2002	-1.0%	-2.0%	0.3%	-25.0%	5.4%	-0.7%	0.0%	-0.6%
2003	0.6%	0.2%	19.8%	-23.3%	3.6%	3.6%	28.0%	1.9%
2004	-7.2%	-8.9%	0.0%	-8.7%	5.7%	-22.6%	0.0%	-9.3%
2005	1.3%	-1.7%	0.0%	0.0%	5.7%	2.8%	0.0%	1.7%
2006	4.0%	-0.3%	0.6%	28.6%	1.9%	-4.8%	0.0%	1.9%
2007	2.1%	4.1%	8.1%	266.7%	2.1%	2.5%	0.0%	3.1%
Average Annual Growth Rate	3.9%	2.9%	4.9%	8.5%	4.5%	3.4%	1.6%	3.8%

2.7(c): System-wise Average Number of Beds per Hospital since 1991

Year	Ayurveda	Unani	Siddha	Yoga	Naturopathy	Homoeopathy	Amchi	Total
(1)	(2)	(3)	(4)	(5)	(6)	(7)	(8)	(9)
1991	11.5	17.0	11.1	12.3	40.5	23.2	12.5	13.8
1992	11.7	16.9	10.8	12.3	39.7	23.3	12.5	13.9
1993	11.8	16.3	10.8	12.0	38.9	23.1	12.5	13.9
1994	12.9	16.5	10.8	13.1	37.9	24.7	12.5	15.0
1995	12.9	16.5	10.8	13.1	37.6	24.7	12.5	15.1
1996	14.3	19.9	13.7	20.1	37.2	29.8	12.5	17.0
1997	15.2	22.0	9.4	25.1	37.0	38.7	12.5	18.0
1998	15.1	22.0	8.2	25.1	36.2	38.8	12.5	17.8
1999	15.1	22.0	8.2	25.1	39.4	38.9	12.5	18.2
2000	16.8	15.5	7.9	16.4	37.4	51.8	12.5	19.2
2001	14.9	16.4	8.4	28.6	36.3	44.6	12.5	17.6
2002	14.9	16.7	8.4	21.4	35.7	45.3	12.5	17.7
2003	19.4	19.7	8.6	14.4	34.9	48.6	16.0	21.8
2004	18.2	17.9	8.6	17.5	34.0	50.5	16.0	20.3
2005	18.4	17.6	8.6	15.0	34.1	50.2	16.0	20.5
2006	17.9	17.2	8.6	16.9	33.3	46.8	16.0	19.8
2007	18.2	17.8	9.4	41.3	33.2	46.7	16.0	20.3

2.7(d): In-Patient-Capacity per crore Population under AYUSH Hospitals since 1991

Year	Ayurveda	Unani	Siddha	Yoga	Naturopathy	Homoeopathy	Amchi	Total
(1)	(2)	(3)	(4)	(5)	(6)	(7)	(8)	(9)
1991	280.5	35.1	14.2	1.6	33.0	75.6	0.3	440.3
1992	279.0	34.6	14.4	1.6	33.1	74.9	0.3	437.8
1993	281.7	32.7	14.1	1.4	33.1	75.2	0.3	438.5
1994	306.9	32.5	13.8	1.5	33.3	79.2	0.3	467.4
1995	301.6	32.6	14.0	1.4	33.2	83.9	0.3	466.9
1996	327.7	38.4	17.5	2.1	33.0	99.3	0.3	518.3
1997	346.2	43.6	14.8	2.1	33.7	97.5	0.3	538.2
1998	341.0	42.8	17.3	2.1	35.4	97.1	0.3	535.9
1999	339.0	44.2	18.6	2.0	39.0	116.7	0.3	559.7
2000	487.0	48.0	18.6	1.3	41.5	143.2	0.2	739.7
2001	427.4	49.8	19.3	1.9	43.5	133.1	0.2	675.4
2002	416.6	48.0	19.0	1.4	45.1	130.0	0.2	660.4
2003	412.3	47.4	22.5	1.1	46.0	132.6	0.3	662.1
2004	376.6	42.5	22.1	1.0	47.8	101.1	0.3	591.4
2005	375.9	41.1	21.8	1.0	49.8	102.3	0.3	592.0
2006	384.5	40.3	21.5	1.2	49.9	95.8	0.3	593.5
2007	386.8	41.3	23.0	4.4	50.2	96.7	0.3	602.6

2.8: System-wise Distribution of AYUSH Dispensaries since 1980 (as on 1st April)

Year	Ayurveda	Unani	Siddha	Yoga	Naturopathy	Homoeopathy	Amchi	Total
(1)	(2)	(3)	(4)	(5)	(6)	(7)	(8)	(9)
1980	11631	970	396			1686		14683
1981	12118	990	427			1806		15341
1982	12194	1042	431			2142		15809
1983	12446	1041	244			2187		15918
1984	11100	860	311			2163		14434
1985	12111	867	316			2296		15590
1986	12109	871	228			6636		19844
1987	12354	966	237			7136		20693
1988	12512	954	304			5201		18971
1989	12839	958	306			5670		19773
1990	12980	963	306			5895		20144
1991	13213	947	308	7	11	6196	58	20740
1992	13325	954	311	7	12	6212	58	20879
1993	13436	959	321	7	11	6326	60	21120
1994	13464	967	326	7	11	6387	59	21221
1995	13699	962	327	7	11	6431	59	21496
1996	13054	970	331	7	11	6472	59	20904
1997	13281	960	347	42	54	4721	59	19464
1998	13507	966	357	42	55	4773	62	19762
1999	13692	970	363	42	55	4891	62	20075
2000	14069	963	356	42	55	5160	62	20707
2001	13939	958	352	65	56	5185	72	20627
2002	13801	945	347	65	57	4952	72	20239
2003	13991	881	399	70	53	5454	126	20974
2004	14028	951	424	70	63	5584	126	21246
2005	13778	971	444	71	58	5690	126	21138
2006	13890	1010	463	71	57	5859	126	21476
2007	13913	1019	488	70	238	5910	131	21769

2.8(a): System-wise Percentage Distribution of AYUSH Dispensaries since 1980

Year	Ayurveda	Unani	Siddha	Yoga	Naturopathy	Homoeopathy	Amchi
(1)	(2)	(3)	(4)	(5)	(6)	(7)	(8)
1980	79.2%	6.6%	2.7%			11.5%	
1981	79.0%	6.5%	2.8%			11.8%	
1982	77.1%	6.6%	2.7%			13.5%	
1983	78.2%	6.5%	1.5%			13.7%	
1984	76.9%	6.0%	2.2%			15.0%	
1985	77.7%	5.6%	2.0%			14.7%	
1986	61.0%	4.4%	1.1%			33.4%	
1987	59.7%	4.7%	1.1%			34.5%	
1988	66.0%	5.0%	1.6%			27.4%	
1989	64.9%	4.8%	1.5%			28.7%	
1990	64.4%	4.8%	1.5%			29.3%	
1991	63.7%	4.6%	1.5%	0.0%	0.1%	29.9%	0.3%
1992	63.8%	4.6%	1.5%	0.0%	0.1%	29.8%	0.3%
1993	63.6%	4.5%	1.5%	0.0%	0.1%	30.0%	0.3%
1994	63.4%	4.6%	1.5%	0.0%	0.1%	30.1%	0.3%
1995	63.7%	4.5%	1.5%	0.0%	0.1%	29.9%	0.3%
1996	62.4%	4.6%	1.6%	0.0%	0.1%	31.0%	0.3%
1997	68.2%	4.9%	1.8%	0.2%	0.3%	24.3%	0.3%
1998	68.3%	4.9%	1.8%	0.2%	0.3%	24.2%	0.3%
1999	68.2%	4.8%	1.8%	0.2%	0.3%	24.4%	0.3%
2000	67.9%	4.7%	1.7%	0.2%	0.3%	24.9%	0.3%
2001	67.6%	4.6%	1.7%	0.3%	0.3%	25.1%	0.3%
2002	68.2%	4.7%	1.7%	0.3%	0.3%	24.5%	0.4%
2003	66.7%	4.2%	1.9%	0.3%	0.3%	26.0%	0.6%
2004	66.0%	4.5%	2.0%	0.3%	0.3%	26.3%	0.6%
2005	65.2%	4.6%	2.1%	0.3%	0.3%	26.9%	0.6%
2006	64.7%	4.7%	2.2%	0.3%	0.3%	27.3%	0.6%
2007	63.9%	4.7%	2.2%	0.3%	1.1%	27.1%	0.6%

2.8(b): Annual Growth Rate of AYUSH Dispensaries since 1981

Year	Ayurveda	Unani	Siddha	Yoga	Naturopathy	Homoeopathy	Amchi	Total
(1)	(2)	(3)	(4)	(5)	(6)	(7)	(8)	(9)
1981	4.2%	2.1%	7.8%			7.1%		4.5%
1982	0.6%	5.3%	0.9%			18.6%		3.1%
1983	2.1%	-0.1%	-43.4%			2.1%		0.7%
1984	-10.8%	-17.4%	27.5%			-1.1%		-9.3%
1985	9.1%	0.8%	1.6%			6.1%		8.0%
1986	0.0%	0.5%	-27.8%			189%		27.3%
1987	2.0%	10.9%	3.9%			7.5%		4.3%
1988	1.3%	-1.2%	28.3%			-27.1%		-8.3%
1989	2.6%	0.4%	0.7%			9.0%		4.2%
1990	1.1%	0.5%	0.0%			4.0%		1.9%
1991	1.8%	-1.7%	0.7%			5.1%		3.0%
1992	0.8%	0.7%	1.0%	0.0%	9.1%	0.3%	0.0%	0.7%
1993	0.8%	0.5%	3.2%	0.0%	-8.3%	1.8%	3.4%	1.2%
1994	0.2%	0.8%	1.6%	0.0%	0.0%	1.0%	-1.7%	0.5%
1995	1.7%	-0.5%	0.3%	0.0%	0.0%	0.7%	0.0%	1.3%
1996	-4.7%	0.8%	1.2%	0.0%	0.0%	0.6%	0.0%	-2.8%
1997	1.7%	-1.0%	4.8%	500%	391%	-27.1%	0.0%	-6.9%
1998	1.7%	0.6%	2.9%	0.0%	1.9%	1.1%	5.1%	1.5%
1999	1.4%	0.4%	1.7%	0.0%	0.0%	2.5%	0.0%	1.6%
2000	2.8%	-0.7%	-1.9%	0.0%	0.0%	5.5%	0.0%	3.1%
2001	-0.9%	-0.5%	-1.1%	54.8%	1.8%	0.5%	16.1%	-0.4%
2002	-1.0%	-1.4%	-1.4%	0.0%	1.8%	-4.5%	0.0%	-1.9%
2003	1.4%	-6.8%	15.0%	7.7%	-7.0%	10.1%	75.0%	3.6%
2004	0.3%	7.9%	6.3%	0.0%	18.9%	2.4%	0.0%	1.3%
2005	-1.8%	2.1%	4.7%	1.4%	-7.9%	1.9%	0.0%	-0.5%
2006	0.8%	4.0%	4.3%	0.0%	-1.7%	3.0%	0.0%	1.6%
2007	0.2%	0.9%	5.4%	-1.4%	317.5%	0.9%	4.0%	1.4%
Average Annual Growth Rate	0.7%	0.2%	0.8%	15.5%	21.2%	4.8%	5.2%	1.5%

2.8(c): Average Number of Dispensaries per crore Population since 1980

Year	Ayurveda	Unani	Siddha	Yoga	Naturopathy	Homoeopathy	Amchi	Total
(1)	(2)	(3)	(4)	(5)	(6)	(7)	(8)	(9)
1980	1740.0	145.1	59.2			252.2		2196.6
1981	1773.4	144.9	62.5			264.3		2245.0
1982	1745.8	149.2	61.7			306.7		2263.3
1983	1743.3	145.8	34.2			306.3		2229.7
1984	1521.3	117.9	42.6			296.5		1978.3
1985	1624.4	116.3	42.4			307.9		2091.0
1986	1589.5	114.3	29.9			871.1		2604.8
1987	1587.3	124.1	30.5			916.9		2658.8
1988	1573.9	120.0	38.2			654.2		2386.3
1989	1581.3	118.0	37.7			698.3		2435.4
1990	1565.6	116.2	36.9			711.1		2429.8
1991	1561.0	111.9	36.4	0.8	1.3	732.0	6.9	2450.3
1992	1542.4	110.4	36.0	0.8	1.4	719.1	6.7	2416.8
1993	1524.1	108.8	36.4	0.8	1.2	717.6	6.8	2395.7
1994	1497.0	107.5	36.2	0.8	1.2	710.1	6.6	2359.4
1995	1493.3	104.9	35.6	0.8	1.2	701.0	6.4	2343.2
1996	1395.5	103.7	35.4	0.7	1.2	691.8	6.3	2234.6
1997	1392.7	100.7	36.4	4.4	5.7	495.0	6.2	2041.0
1998	1389.7	99.4	36.7	4.3	5.7	491.1	6.4	2033.3
1999	1382.7	98.0	36.7	4.2	5.6	493.9	6.3	2027.3
2000	1394.9	95.5	35.3	4.2	5.5	511.6	6.1	2053.0
2001	1355.0	93.1	34.2	6.3	5.4	504.0	7.0	2005.1
2002	1320.0	90.4	33.2	6.2	5.5	473.6	6.9	1935.7
2003	1316.9	82.9	37.6	6.6	5.0	513.4	11.9	1974.2
2004	1300.0	88.1	39.3	6.5	5.8	517.5	11.7	1968.8
2005	1257.4	88.6	40.5	6.5	5.3	519.3	11.5	1929.1
2006	1246.6	90.6	41.6	6.4	5.1	525.8	11.3	1927.5
2007	1230.1	90.1	43.1	6.2	21.0	522.5	11.6	1924.7

2.9: AYUSH Medical Care Facilities by Management Status since 1980 (as on 1st April)

Year	Hospitals				Dispensaries			Total
	Govt.	Local Body	Others	Total	Govt.	Local Body	Others	
(1)	(2)	(3)	(4)	(5)	(6)	(7)	(8)	(9)
1980	331	0	119	450	9580	5103	0	14683
1981	365	2	145	512	10157	5120	64	15341
1982	427	4	158	589	10939	3502	1368	15809
1983	457	33	129	619	10950	2913	2055	15918
1984	1609	79	126	1814	10138	3430	866	14434
1985	1622	77	132	1831	11277	3433	880	15590
1986	1633	77	138	1848	11288	3418	5138	19844
1987	1660	79	139	1878	12216	2557	5920	20693
1988	1658	77	183	1918	12965	2283	3723	18971
1989	1677	77	245	1999	13613	2426	3734	19773
1990	1733	78	255	2066	13966	2417	3761	20144
1991	2350	78	269	2697	14738	2393	3609	20740
1992	2371	78	274	2723	14877	2393	3609	20879
1993	2407	77	293	2777	15109	2398	3613	21120
1994	2416	77	314	2807	15226	2367	3628	21221
1995	2426	78	341	2845	15424	2333	3739	21496
1996	2427	78	343	2848	15509	2333	3062	20904
1997	2411	82	363	2856	16224	2438	802	19464
1998	2476	82	372	2930	16519	2438	805	19762
1999	2498	154	393	3045	17212	1984	879	20075
2000	3415	74	391	3880	17806	2069	832	20707
2001	3438	74	431	3943	18020	2052	555	20627
2002	3398	75	436	3909	17552	2054	633	20239
2003	2691	77	456	3224	18598	1856	520	20974
2004	2659	18	459	3136	19177	1523	546	21246
2005	2666	18	474	3158	18959	1721	458	21138
2006	2842	16	482	3340	19325	1763	388	21476
2007	2842	14	504	3360	19496	1690	583	21769
Average Annual Growth Rate	8.3%	7.8%	5.5%	7.7%	2.7%	-4.0%	8.9%	1.5%

2.9(a): Status of Medical Care Facilities under Ayurveda since 1980 (As on 1st April)

Year	Hospitals				Dispensaries			
	Govt.	Local Body	Others	Total	Govt.	Local Body	Others	Total
(1)	(2)	(3)	(4)	(5)	(6)	(7)	(8)	(9)
1980	219		33	252	7407	4224	-	11631
1981	243		33	276	7821	4233	64	12118
1982	258	2	48	308	8362	2657	1175	12194
1983	284	4	43	331	8508	2081	1857	12446
1984	1333	79	40	1452	7293	3099	708	11100
1985	1341	77	42	1460	8289	3101	721	12111
1986	1350	77	42	1469	8329	3109	671	12109
1987	1375	79	42	1496	8700	2235	1419	12354
1988	1378	77	46	1501	9165	1953	1394	12512
1989	1382	77	68	1527	9792	1673	1374	12839
1990	1383	77	70	1530	9959	1664	1357	12980
1991	1916	77	63	2056	10379	1622	1212	13213
1992	1926	77	65	2068	10491	1622	1212	13325
1993	1961	77	73	2111	10604	1622	1210	13436
1994	1966	77	93	2136	10656	1598	1210	13464
1995	1969	78	94	2141	10834	1569	1296	13699
1996	1969	78	94	2141	10866	1569	619	13054
1997	1977	82	120	2179	11026	1703	552	13281
1998	1986	82	121	2189	11252	1703	552	13507
1999	1984	113	120	2217	11846	1234	612	13692
2000	2762	33	136	2931	12161	1337	571	14069
2001	2773	33	149	2955	12305	1318	316	13939
2002	2752	34	146	2932	12085	1320	396	13801
2003	2061	34	158	2253	12779	971	241	13991
2004	2054	16	158	2228	13060	739	229	14028
2005	2060	16	158	2234	12734	896	148	13778
2006	2221	14	159	2394	12874	938	78	13890
2007	2221	14	167	2402	12942	880	91	13913
Average Annual Growth Rate	8.9%	8.1%	6.4%	8.7%	2.0%	-5.9%	1.4%	0.5%

Note: The figures of 'Govt.' and 'others' Dispensaries have been revised for the period 1991-1997.

2.9(b): Status of Medical Care Facilities under Unani Since 1980 (as on 1st April)

Year	Hospitals				Dispensaries			Total
	Govt.	Local Body	Others	Total	Govt.	Local Body	Others	
(1)	(2)	(3)	(4)	(5)	(6)	(7)	(8)	(9)
1980	13		6	19	632	338		970
1981	15		4	19	652	338		990
1982	18		10	28	701	319	22	1042
1983	20	2	7	29	716	302	23	1041
1984	92		6	98	684	162	14	860
1985	93		7	100	694	162	11	867
1986	93		8	101	695	164	12	871
1987	94		6	100	795	168	3	966
1988	93		8	101	781	169	4	954
1989	99		10	109	785	169	4	958
1990	100	1	9	110	788	169	6	963
1991	159	1	15	175	773	169	5	947
1992	161	1	15	177	780	169	5	954
1993	162		15	177	785	169	5	959
1994	162		15	177	791	171	5	967
1995	163		18	181	791	166	5	962
1996	163		18	181	799	166	5	970
1997	167		22	189	789	166	5	960
1998	167		22	189	795	166	5	966
1999	168	2	29	199	798	166	6	970
2000	282	2	28	312	813	145	5	963
2001	281	2	29	312	821	135	2	958
2002	269	2	29	300	808	135	2	945
2003	228	2	25	255	821	60		881
2004	232		24	256	933	18		951
2005	232		24	256	927	43	1	971
2006	237		24	261	966	43	1	1010
2007	238		24	262	976	43		1019
Average Annual Growth Rate	11.2%		7.1%	10.6%	1.6%	-7.6%		0.1%

Note: The figures of 'Govt.' and 'others' Dispensaries have been revised for the period 1991-1997.

2.9(c): Status of Medical Care Facilities under Siddha since 1980 (as on 1st April)

Year	Hospitals				Dispensaries			
	Govt.	Local Body	Others	Total	Govt.	Local Body	Others	Total
(1)	(2)	(3)	(4)	(5)	(6)	(7)	(8)	(9)
1980	74			74	396			396
1981	76			76	427			427
1982	105			105	431			431
1983	105			105	244			244
1984	105			105	311			311
1985	105			105	316			316
1986	106			106	228			228
1987	105			105	237			237
1988	105			105	304			304
1989	107			107	306			306
1990	107			107	306			306
1991	108			108	308			308
1992	115			115	311			311
1993	115			115	321			321
1994	115			115	326			326
1995	119			119	327			327
1996	119			119	331			331
1997	151			151	347			347
1998	204			204	357			357
1999	224			224	363			363
2000	236			236	356			356
2001	237			237	352			352
2002	236			236	347			347
2003	272		4	276	399			399
2004	272		4	276	424			424
2005	272		4	276	444			444
2006	277		3	280	463			463
2007	273		4	277	488			488
Average Annual Growth Rate	5.0%			5.1%	0.5%			0.5%

Note: The figures of 'Govt.' and 'others' Dispensaries have been revised for the period 1991-1997.

2.9(d): Status of Medical Care Facilities under Homoeopathy Since 1980 (as on 1st April)

Year	Hospitals				Dispensaries			
	Govt.	Local Body	Others	Total	Govt.	Local Body	Others	Total
(1)	(2)	(3)	(4)	(5)	(6)	(7)	(8)	(9)
1980	24		53	77	1145	541		1686
1981	29	2	80	111	1257	549		1806
1982	44	2	72	118	1445	526	171	2142
1983	46	27	47	120	1482	530	175	2187
1984	77		44	121	1850	169	144	2163
1985	81		46	127	1978	170	148	2296
1986	82		47	129	2036	145	4455	6636
1987	84		47	131	2484	154	4498	7136
1988	80		83	163	2715	161	2325	5201
1989	87		118	205	2730	584	2356	5670
1990	141		123	264	2913	584	2398	5895
1991	151		125	276	3265	602	2329	6196
1992	153		125	278	3281	602	2329	6212
1993	154		133	287	3386	607	2333	6326
1994	157		131	288	3440	598	2349	6387
1995	159		152	311	3459	598	2374	6431
1996	160		152	312	3500	598	2374	6472
1997	103		137	240	4049	569	103	4721
1998	106		137	243	4101	569	103	4773
1999	110	39	148	297	4191	584	116	4891
2000	123	39	117	279	4462	587	111	5160
2001	135	39	133	307	4497	591	97	5185
2002	129	39	132	300	4266	591	95	4952
2003	118	41	131	290	4552	817	85	5454
2004	86	2	128	216	4709	758	117	5584
2005	86	2	135	223	4799	774	117	5690
2006	91	2	135	228	4968	774	117	5859
2007	94		140	234	5034	758	118	5910
Average Annual Growth Rate	5.2%		3.7%	4.2%	5.6%	1.3%	-1.5%	4.8%

Note: The figures of 'Others' dispensaries for 1986-2003 have been revised in the light of clarifications received from State Governments. The figures of 'Govt.' Dispensaries have also been revised for the period 1991-1997.

2.9(e): Status of Medical Care Facilities under Yoga Since 1991 (as on 1st April)

Year	Hospitals				Dispensaries			
	Govt.	Local Body	Others	Total	Govt.	Local Body	Others	Total
(1)	(2)	(3)	(4)	(5)	(6)	(7)	(8)	(9)
1991	8		3	11	3		4	7
1992	8		3	11	3		4	7
1993	7		3	10	3		4	7
1994	7		3	10	3		4	7
1995	7		3	10	3		4	7
1996	7		3	10	3		4	7
1997	3		5	8	3		39	42
1998	3		5	8	3		39	42
1999	3		5	8	3		39	42
2000	3		5	8	3		39	42
2001	3		4	7	29		36	65
2002	3		4	7	29		36	65
2003	3		5	8	30		40	70
2004	3		3	6	30		40	70
2005	4		3	7	31		40	71
2006	4		4	8	31		40	71
2007	4		8	12	29	1	40	70
Average Annual Growth Rate	-4.0%		5.9%	0.5%	14.3%		14.5%	14.5%

Source : AYUSH IN INDIA-1992, 1993, 1994, 1998, 2001, 2003 and 2005; State Governments for the years 2004, 2006 and 2007.

Note : The figures for remaining years have been estimated.

2.9(f): Status of Medical Care Facilities under Naturopathy Since 1991 (as on 1st April)

Year	Hospitals				Dispensaries			
	Govt.	Local Body	Others	Total	Govt.	Local Body	Others	Total
(1)	(2)	(3)	(4)	(5)	(6)	(7)	(8)	(9)
1980	1		27	28				
1981	2		28	30				
1982	2		28	30				
1983	2		32	34				
1984	2		36	38				
1985	2		37	39				
1986	2		41	43				
1987	2		44	46				
1988	2		46	48				
1989	2		49	51				
1990	2		53	55				
1991	8		61	69	8		3	11
1992	8		64	72	9		3	12
1993	8		67	75	8		3	11
1994	9		70	79	8		3	11
1995	9		72	81	8		3	11
1996	9		74	83	8		3	11
1997	10		77	87	8		46	54
1998	10		85	95	9		46	55
1999	9		89	98	9		46	55
2000	9		103	112	9		46	55
2001	9		114	123	10	8	38	56
2002	9		123	132	11	8	38	57
2003	9		131	140	11	8	34	53
2004	12		140	152	15	8	40	63
2005	12		148	160	18	8	32	58
2006	12		155	167	17	8	32	57
2007	12		159	171	21	8	209	238
Average Annual Growth Rate	9.6%		6.8%	6.9%	5.8%		28.4%	19.8%

Source : AYUSH IN INDIA-1992, 1993, 1994, 1998, 2001, 2003 and 2005;
State Governments for the years 2004, 2006 and 2007;
Central Council for Research in Yoga & Naturopathy (CCRYN).

2.9(g): Status of Medical Care Facilities under Amchi Since 1992 (as on 1st April)

Year	Hospitals					Dispensaries				
	Others under			Total Amchi Hospitals	Govt.	Local Body	Others under			Total Amchi Dispensaries
	States	TMAI	Total				States	TMAI	Total	
(1)	(2)	(3)	(4)	(5)	(6)	(7)	(9)	(10)	(11)	(12)
1991	1	1	2	2	2		25	31	56	58
1992	1	1	2	2	2		25	31	56	58
1993	1	1	2	2	2		25	33	58	60
1994	1	1	2	2	2		25	32	57	59
1995	1	1	2	2	2		25	32	57	59
1996	1	1	2	2	2		25	32	57	59
1997	1	1	2	2	2		25	32	57	59
1998	1	1	2	2	2		25	35	60	62
1999	1	1	2	2	2		25	35	60	62
2000	1	1	2	2	2		25	35	60	62
2001	1	1	2	2	6		26	40	66	72
2002	1	1	2	2	6		26	40	66	72
2003	1	1	2	2	6		80	40	120	126
2004	1	1	2	2	6		80	40	120	126
2005	1	1	2	2	6		80	40	120	126
2006	1	1	2	2	6		80	40	120	126
2007	1	1	2	2	6		80	45	125	131
Average Annual Growth Rate	0.0%	0.0%	0.0%	0.0%	7.1%		7.5%	2.4%	5.1%	5.2%

Source: State Governments and TMAI, Dharmshala, Himachal Pradesh.

Note: Figures for 1991 have been derived from those of 1992.

2.10: System-wise AYUSH Medical Care Facilities under CGHS and Central Government Organizations

S. No.	Organization	Ayurveda			Unani			Siddha			Yoga			Naturopathy			Homoeopathy			Amchi			Total		
		H	B	D	H	B	D	H	B	D	H	B	D	H	B	D	H	B	D	H	B	D	H	B	D
(1)	(2)	(3)	(4)	(5)	(6)	(7)	(8)	(9)	(10)	(11)	(12)	(13)	(14)	(15)	(16)	(17)	(18)	(19)	(20)	(21)	(22)	(23)	(24)	(25)	(26)
1	Central Government Health Scheme (CGHS)	1	25	35			11			3			2						37				1	25	88
2	Labour Ministry																								
	i) ESI Corporation			107					5										32						144
	ii) Mica Mines			3																					3
	iii) Dolomite Mines			13																					13
	iv) Beedi Workers			7																					7
	Total (2)			130					5										32						167
3	Ministry of Coal																								
	i) Eastern Coalfields Limited			3																					3
	ii) Bharat Coking Coal Limited			4																					4
	iii) Central Coalfields Limited			2																					2
	iv) South Eastern Coalfields Limited			4																					4
	v) Mahanadi Coalfields Limited			2																					2
	vi) Neyvelli Lignite			1																					1
	Total (3)			16																					16
4	Railway Ministry			39															129						168
5	National Institutes	3	350	1	1	100	1	1	120						1	1	60	2				6	630	4	
6	Research Councils	21	500	1	7	191	10	2	85	2					5	3	85	29				1	33	861	48
T O T A L		25	875	222	8	291	21	3	205	10			2			6	4	145	229			1	40	1516	491

H : Hospitals, B : Beds, D : Dispensaries

2.10 (a) AYUSH Hospitals under Central Government Organizations as on 1.4.2007

S. No.	Ministry/Organization/ State/Union Territory	Ayurveda		Unani		Siddha		Homoeopathy		All Systems	
		Hosp.	Bed	Hosp.	Bed	Hosp.	Bed	Hosp.	Bed	Hosp.	Bed
(1)	(2)	(3)	(4)	(5)	(6)	(7)	(8)	(9)	(10)	(11)	(12)
I. Hospitals under Research Councils											
1	Andhra Pradesh	1	10	1	50			1	25	3	85
2	Arunachal Pradesh	1	10							1	10
3	Bihar	1	25	1	25					2	50
4	Delhi	1	50	1	16					2	66
5	Gujarat	1	25							1	25
6	Himachal Pradesh	1	10							1	10
7	Jammu & Kashmir	1	10	1	25					2	35
8	Karnataka	2	20							2	20
9	Kerala	2	50					1	50	3	100
10	Madhya Pradesh	1	25							1	25
11	Maharashtra	2	60							2	60
12	Orissa	1	50	1	25			1	10	3	85
13	Punjab	1	50							1	50
14	Rajasthan	1	25							1	25
15	Sikkim	1	10							1	10
16	Tamil Nadu	1	20	1	25	1	60			3	105
17	Uttar Pradesh	1	25	1	25					2	50
18	West Bengal	1	25							1	25
19	Puducherry					1	25			1	25
	Total (I)	21	500	7	191	2	85	3	85	33	861
II. Hospitals under National Institutes											
1	National Institute of Ayurveda, Jaipur	2	200							2	200
2	National Institute of Unani Medicine, Bangalore			1	100					1	100
3	National Institute of Siddha, Chennai				1	120		1	120		
4	National Institute of Homoeopathy, Kolkata							1	60	1	60
5	Institute of Post Graduate Teaching & Research in Ayurveda	1	150							1	150
	Total (II)	3	350	1	100	1	120	1	60	6	630
III. Central Government Health Scheme (CGHS)											
1	Delhi	1	25							1	25
	Grand Total (I+II+III)	25	875	8	291	3	205	4	145	40	1516

Source : Central Research Councils, National Institutes and DGHS.

**2.10(b) AYUSH Dispensaries under Central Government Health Scheme (CGHS)
as on 01.04.07**

S. No.	State /UT	Cities	Ayurveda	Unani	Siddha	Yoga	Homoeopathy	All AYUSH Systems
(1)	(2)	(3)	(4)	(5)	(6)	(7)	(8)	(9)
1	Andhra Pradesh	Hyderabad	2	2			2	6
2	Assam	Guwahati					1	1
3	Bihar	Patna	1				1	2
4	Delhi	Delhi	15	5	1	2	14	37
5	Gujarat	Ahmedabad	1				1	2
6	Karnataka	Bangalore	2	1			1	4
7	Kerala	Thiruvananthapuram	1				1	2
8	Madhya Pradesh	Bhopal		1			1	2
9	Maharashtra	Mumbai, Nagpur, Pune	5				6	11
10	Orissa	Bhubneswar	1					1
11	Rajasthan	Jaipur	1				1	2
12	Tamil Nadu	Chennai	1		2		1	4
13	Uttar Pradesh	Lucknow, Allahabad Kanpur and Meerut	4	1			5	10
14	West Bengal	Calcutta	1	1			2	4
Total			35	11	3	2	37	88

Source: Director General of Health Services (DGHS)

**2.10(c) AYUSH Dispensaries under Labour, Coal and Railways Ministries
as on 1.4.2007**

Ministry/Organization/ State/Union Territory (1)	Ayurveda (2)	Unani (3)	Siddha (4)	Homoeopathy (5)	All AYUSH Systems (6)
I. AYUSH Dispensaries under Ministry of Labour					
(a) Employees' State Insurance Corporation (ESI)					
1. Andhra Pradesh	2			1	3
2. Delhi	11			4	15
3. Gujarat	52				52
4. Haryana	1				1
5. Karnataka	2				2
6. Kerala	10			14	24
7. Madhya Pradesh	3				3
8. Maharashtra	10				10
9. Punjab	1				1
10. Orissa	1			1	2
11. Rajasthan	1			1	2
12. Tamil Nadu	1		5		6
13. Uttar Pradesh	11			11	22
14. Chandigarh	1				1
Total Dispensaries under ESI (a)	107		5	32	144
(b) Mica Mines	3				3
(c) Dolomite Mines	13				13
(d) Beedi Workers	7				7
Total Dispensaries (I)	130		5	32	167
II. AYUSH Dispensaries under Ministry of Coal					
(a) Eastern Coalfields Limited	3				3
(b) Bharat Coking Coal Limited	4				4
(c) Central Coalfields Limited	2				2
(d) South Eastern Coalfields Limited	4				4
(e) Mahanadi Coalfields Limited	2				2
(f) Neyveli Lignite Corporation Limited	1				1
Total Dispensaries (II)	16				16
III. AYUSH Dispensaries under Ministry of Railways					
Total Dispensaries (III)	39			129	168
Grand Total (I+II+III)	185		5	161	351

Source : Employees' State Insurance Corporation (ESI), M/o Labour, M/o Coal, M/o Railways.

**2.10 (d) AYUSH Dispensaries under National Institutes
and Research Councils as on 1.4.2007**

S. No.	National Institute/ State/ Union Territories	Ayurveda	Unani	Siddha	Naturopathy	Homoeopathy	Amchi	Total
(1)	(2)	(3)	(4)	(5)	(6)	(7)	(8)	(9)

I. AYUSH Dispensaries under National Institutes

1	National Institute of Naturopathy, Pune				1			1
2	National Institute of Homoeopathy, Kolkata					2		2
3	Institute of Post Graduate Teaching & Research in Ayurveda	1						1
	Total (I)	1			1	2		4

II. AYUSH Dispensaries under Research Councils

1	Andhra Pradesh					3		3
2	Arunachal Pradesh					1		1
3	Assam	1	2			1		4
4	Bihar					1		1
5	Chhattisgarh					1		1
6	Delhi		1		5	2		8
7	Gujarat					1		1
8	Haryana					1		1
9	Himachal Pradesh					1		1
10	Jammu & Kashmir						1	1
11	Jharkhand					1		1
12	Karnataka		1			1		2
13	Kerala			1				1
14	Madhya Pradesh		1					1
15	Maharashtra		1			1		2
16	Manipur					1		1
17	Meghalaya					1		1
18	Mizoram					1		1
19	Nagaland					1		1
20	Rajasthan					1		1
21	Sikkim					1		1
22	Tamil Nadu			1		1		2
23	Tripura					1		1
24	Uttar Pradesh		3			3		6
25	West Bengal		1			1		2
26	A & N Islands					1		1
27	Puducherry					1		1
	Total (II)	1	10	2	5	29	1	48
Grand Total (I+II)		2	10	2	6	31	1	52

Source : National Institutes and Central Research Councils

