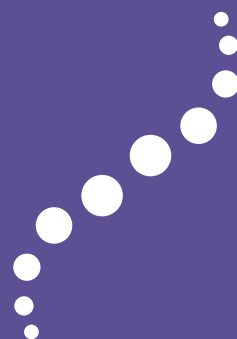


AYUSH IN INDIA 2007

# Section 8



Population And Vital Statistics



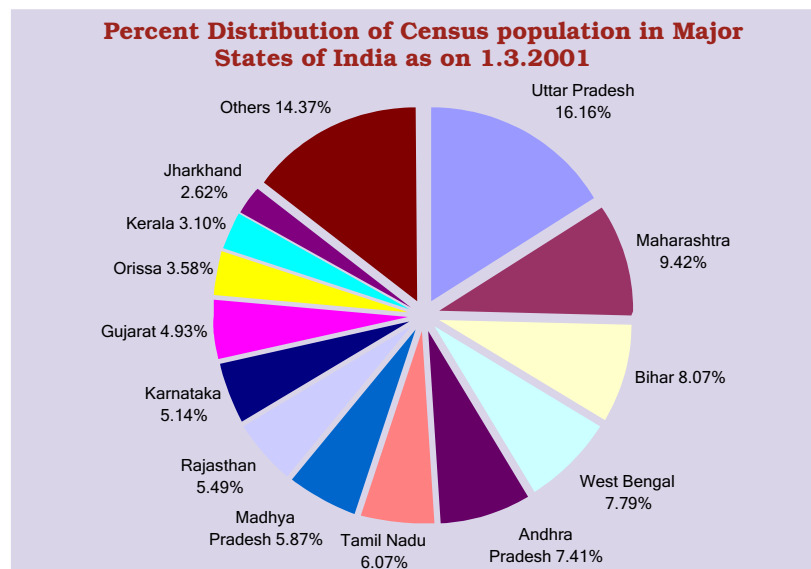


## SECTION 8 : POPULATION AND VITAL STATISTICS

# T

This section includes abstracts of data on population and vital statistics of India based on the decadal census population. Demographic characteristics provide an overview of its population size, composition and the components of changes such as natality, mortality and social mobility. In addition to population statistics, vital statistics include indicators such as birth rate, death rate, natural growth rate, fertility rate etc.

India's population is distributed across 35 states and union territories of varying population size, which as on 1st march 2001 stood at 10287.37 lakh (5322.23 lakh males and 4965.14 lakh females). Urban population was 27.8% of the total population as per 2001 Census. The projected population of India as on 1.3.2007 are 11285.21 lakh (5840.19 lakh males and 5445.02 lakh females) and the rural and urban population projections were 8167.42 lakh and 3143.01 lakh respectively.

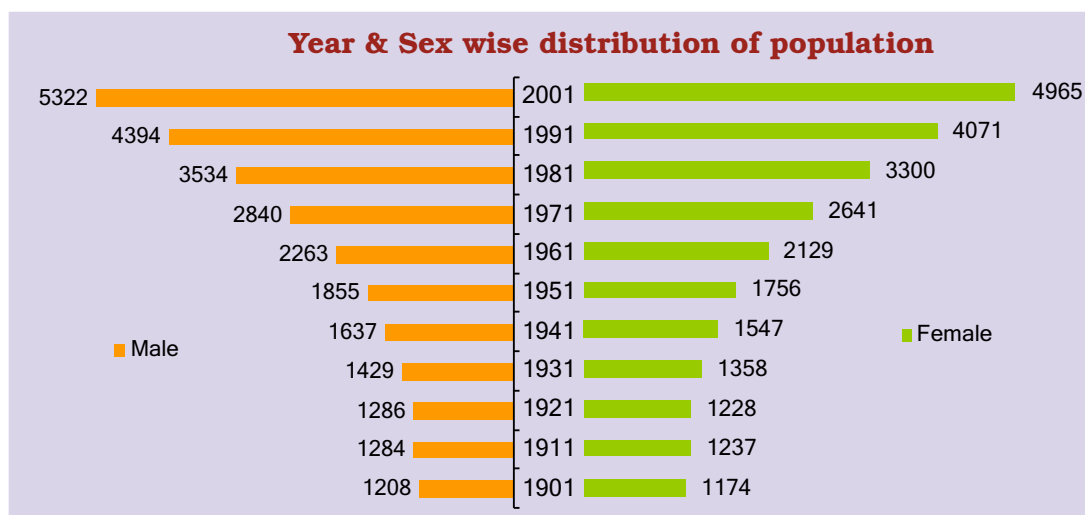
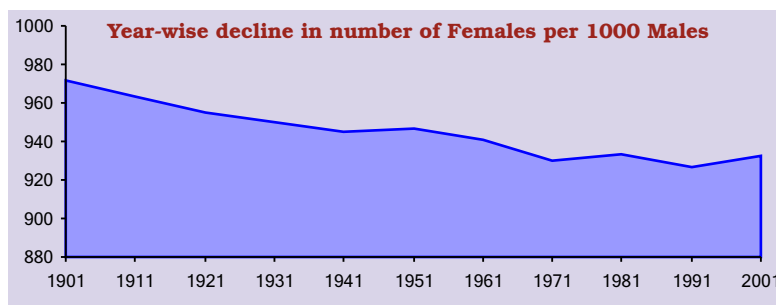


### Growth in Indian Population :

The population of India rose from 3610.88 lakh in 1951 to 10287.37 lakh in 2001, nearly tripling in size in half a century. The exponential growth rate of the population, which is an indicator of annual average rate of change of population, peaked at 2.2% during the decades 1961-71 and 1971-81. The growth rate declined marginally to 2.1% in 1981-91 and to 2.0% in 1991-2001. Both male and female population had grown annually at an average exponential growth rate of 2.1% over the period 1951-2001. Population growth in India has been rapid and has important implications for social and economic development and quality of life. A substantial growth in the population of the country is almost inevitable.

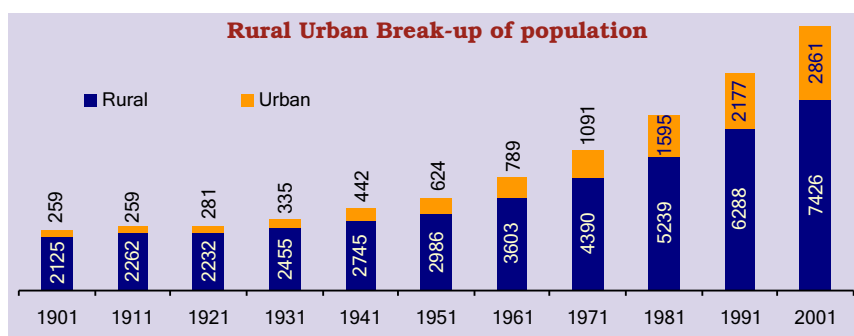
### Sex-Ratio of Indian Population :

The sex ratio in India had been unfavourable to the females. The female to male sex ratio had declined substantially since the beginning of the century, resulting in a substantial female deficit in the population. The sex ratio declined from 972 in 1901 to 930 in 1971, but it had remained fairly the same since then. The country had a low sex ratio of 933 females per thousand males in 2001, which had shown slight improvement over the last decade. An important feature of the population sex ratio in India is its regional variations that have persisted over time.



### Urbanisation of Indian Population :

The process of urbanisation had rather been slow in India upto 1941, thereafter, urbanisation accelerated. The urban population in India was 624.44 lakh at the first Census after Independence, which increased to 2861.20 lakh in 2001. The proportion of urban population had increased from 17.3% in 1951 to 27.8% in 2001. This indicates a relatively low pace



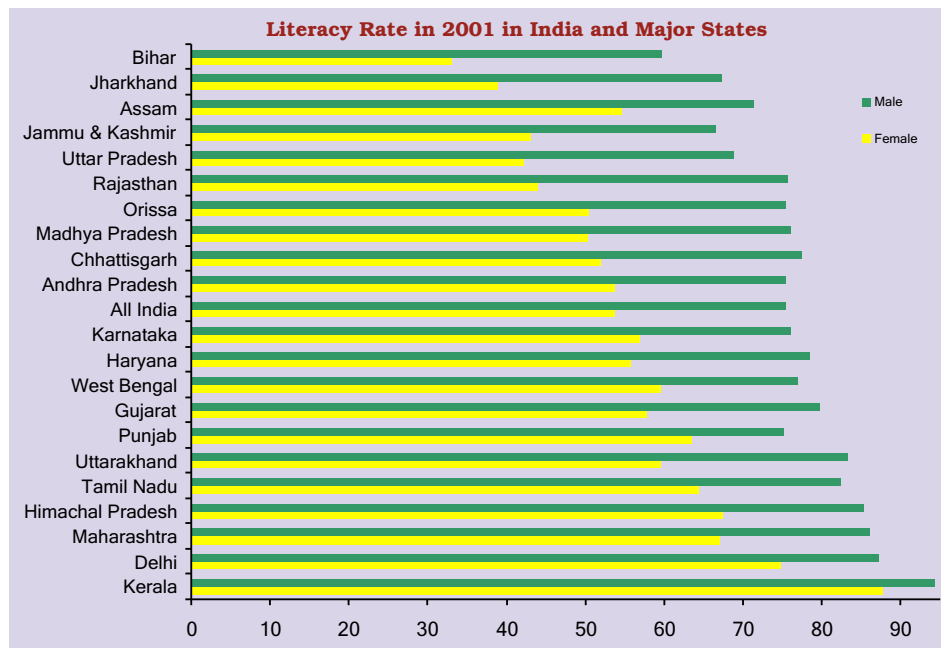
of urbanisation in the country. The exponential growth rate of urban population over the period 1951-2001 peaked at 3.8% in 1971-81. Since then, the urban growth rate had been decelerating to 3.1% in 1981-91 and to 2.7% in 1991-2001. Despite the slow down in the urban population growth rate, the absolute increase in urban population has kept on rising. Shifting of rural population towards urban areas took place in each decade since 1951 which had resulted in the growth of urban population.

The level of urbanisation varies widely across states and union territories. In union territories except Dadra & Nagar Haveli, the level of urbanisation is higher than national level. The states and union territories having about more than or equal to 50% of its population living in the urban areas in 2001 were Delhi (93.2%), Chandigarh (89.8%), Puducherry (66.6%) and Goa (49.8%). The states and union territories having more than or equal to 25% to less than 50% of its population living in urban areas were Andhra Pradesh, Gujarat, Haryana, Karnataka, Kerala, Madhya Pradesh, Maharashtra, Manipur, Mizoram, Punjab, Tamilnadu, Uttarakhand, West Bengal, Andaman & Nicobar Islands,

Dadra & Nagar Haveli, Daman & Diu and Lakshadweep. The states and union territories having more than or equal to 15% to less than 25% of its population living in the urban areas were Arunachal Pradesh, Chhattisgarh, Jammu & Kashmir, Jharkhand, Meghalaya, Nagaland, Rajasthan, Tripura and Uttar Pradesh. Rest of the states are less urbanized, having less than 15% urban population.

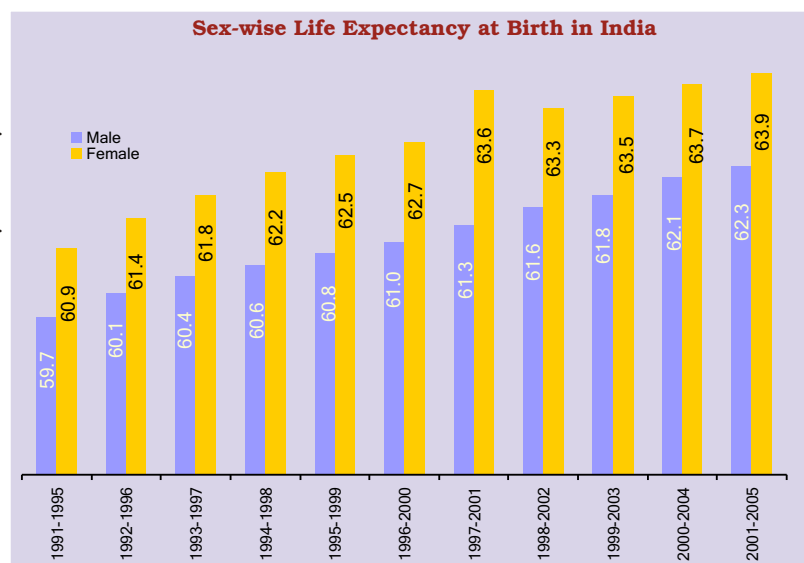
### Literacy Rate of Indian Population :

Literacy had increased substantially over time, but the education levels vary widely throughout India. The literacy rate in the country had shown an increase of 13.86% during the decade 1991-2001. As per 2001 Census, 64.8% of the population was literate. The male literacy rate was higher (75.3%) in comparison to female literacy rate which was 53.7%. The level of literacy as per 2001 Census among the States and union territories of India is depicted below :



### Life Expectancy in India:

Life expectancy is one of the most preferred indicator in demographic and health analysis. It has been defined as the average number of years that a new born could expect to live, if he/she were to pass through life exposed to the age and sex-specific death rates prevailing at the time of his/her birth, for a specific year. Besides, Life Expectancy at birth is used in construction of a dimensional index of health in Human Development Index (HDI) and Gender Development Index (GDI). The life expectancy at birth had been increasing for both males and females from 1991-2005. The life expectancy of male population had increased from 59.7 years from the period 1991-1995 to 62.3 years during the period 2001-05, whereas, the life expectancy of female population had increased from 60.9 years from the period 1991-1995 to 63.9 years during the period 2001-05. This is an indication that there had been an improvement in the mortality situation for both males and females.



**Still Birth :**

A stillborn baby is legally defined as a baby born after the 24th week of pregnancy who did not show any signs of life at any time after being born. If there were no signs of life before 24 weeks, it is known as miscarriage.

**Live Birth :**

A live birth occurs when a foetus, whatever its gestational age, exits the maternal body and subsequently shows any sign of life, such as voluntary movement, heartbeat, or pulsation of the umbilical cord, for however brief a time and regardless of whether the umbilical cord or placenta are intact.

**Crude Birth Rate :**

The Crude Birth Rate (CBR) is defined as the number of live births in a year per thousand of the mid-year population. The birth rate declined from 29.5 in 1991 to 23.5 in 2006. The birth rate of rural population had declined from 30.9 in 1991 to 25.2 in 2006, whereas, the birth rate of urban population had declined from 24.3 in 1991 to 18.8 in 2006.

**Crude Death Rate:**

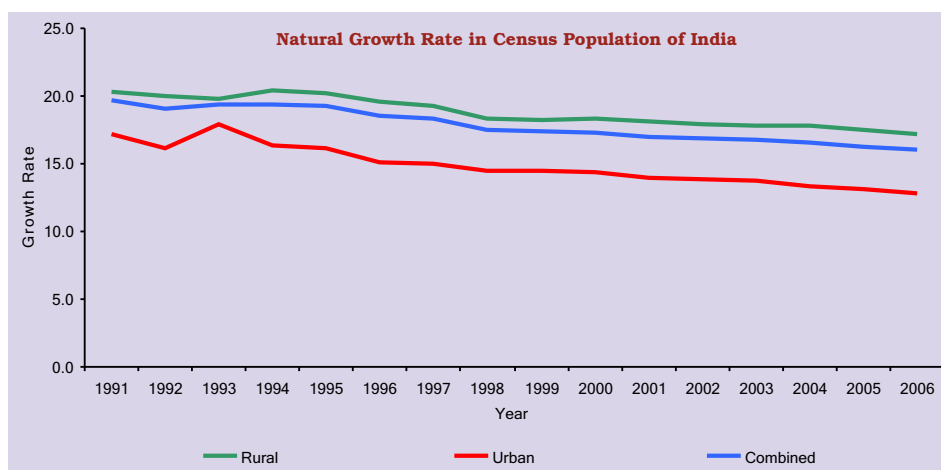
The Crude Death Rate (CDR) is measured as the ratio of the number of deaths in a year to one thousand of the midyear population. CDR in the country had declined marginally during the period 1991-2006, from 9.8 in 1991 to 7.5 in 2006. The death rate of rural population had declined from 10.6 in 1991 to 8.1 in 2006, whereas, the death rate of urban population had declined from 7.1 in 1991 to 6 per thousand population in 2006.

**Natural Growth Rate:**

The Natural growth rate in population is measured by the difference of birth rate to death rate. It indicates the natural growth of population of a country. The Natural growth rates had declined during the period 1991-2006 from 19.7 in 1991 to 16 per thousand population in 2006. The Natural growth rate of rural population had declined from 20.3 in 1991 to 17.2 per thousand population in 2006, whereas, for urban population, it had declined from 17.2 in 1991 to 12.8 per thousand population in 2006. The population, however, continued to grow as the decline in birth rate is not as rapid as the decline in the death rate.

**Infant Mortality Rate:**

The Infant mortality rate (IMR) is defined as the number of infant deaths in a year per 1,000 live births during the same year. The infant mortality rate in the country had shown a declining trend during the period 1993-2006. IMR had declined from 74 in 1993 to 57 in 2006. The IMR of rural population had declined from 82 in 1993 to 62 in 2006, whereas, the IMR of urban population had declined from 45 in 1993 to 39 in 2006. The IMR had steadily been declining though it had been higher in rural areas. Nationally, a girl child's disadvantage with regard to survival had been most evident in the under 5 mortality rate as 79 girls per 1000 births die before their fifth birthday, compared with 70 boys per 1000 births.



**Neo-natal Mortality Rate:**

The neo-natal mortality rate is measured as the ratio of number of deaths of infant of age less than 29 days to one thousand live births in that year. The Neo-natal mortality rate in the country had also shown a declining trend during the period 1993-2005, from 47.1 in 1993 to 37 in 2005. The Neo-natal mortality rate of rural population had declined from 52.3 in 1993 to 41 in 2005, whereas, for urban population, it had declined from 28.4 in 1993 to 23 in 2005.

**Post-natal Mortality Rate:**

The post-natal mortality rate is defined as the number of deaths of children between 29 days and one year of age in a given year per 1000 total live births in the same year. The Post-natal mortality rate of India had declined from 26 in 1994 to 22 in 2005. The Post-natal mortality rate of rural population had declined from 27.5 in 1994 to 23 in 2005, whereas, for urban population, it had declined from 19.6 in 1994 to 17 in 2005.

**Peri-natal Mortality Rate:**

The peri-natal mortality rate is measured by the ratio of number of still births and infant deaths of age less than 7 days per thousand of live births and still births in a particular year. The Peri-natal mortality rate of India had declined from 44.2 in 1993 to 37 in 2005. The Peri-natal mortality rate of rural population had declined from 47.9 in 1993 to 40 in 2005, whereas, for urban population, it had declined from 31 in 1993 to 24 in 2005. It has been observed that Peri-natal mortality rate had been highest for rural mothers and for mothers with no education.

**Still birth Rate:**

The still birth rate is measured by the ratio of still births to one thousand still births and live births in a particular year. The still birth rate had declined from 10.5 in 1993 to 9 in 2005. The Still birth rate of rural population had declined from 10.8 in 1993 to 9 in 2005, whereas, for urban population, it had declined from 9.3 in 1993 to 8 in 2005.

**Total Fertility Rate:**

Total Fertility Rate (TFR) signifies the total number of children an average woman will produce in her child bearing years. TFR is a useful indicator for analyzing the prospects for population stabilization. Fertility continued to decline in India and TFR for the year 2005 had been estimated as 2.9 per women. TFR for rural areas had been estimated as 3.2 per women, whereas, TFR for urban areas had been estimated as 2.1 per women. In 2000, the country established a new National Population Policy to stem the growth of the country's population. One of the primary goals of the policy was to reduce the total fertility rate to 2.1 by 2010. Fertility in India continues to be above the replacement level. In 2005, a woman in India produced, on average, 2.9 births during her entire reproductive life, which is well above the replacement level of 2.1 births per women.



**8.1: Trends in Census Population in India 1901-2001**

Year	Population (in Lakhs)			Population (in Lakhs)		Sex Ratio (Females/ 1000 Males)	Urban Population (%)
	Males	Females	Total	Rural	Urban		
(1)	(2)	(3)	(4)	(5)	(6)	(7)	(8)
1901	1207.91	1173.59	2383.96	2125.44	258.52	972	10.8
1911	1283.85	1237.08	2520.93	2261.52	259.42	964	10.3
1921	1285.50	1227.70	2513.21	2232.35	280.86	955	11.2
1931	1429.30	1357.89	2789.77	2455.21	334.56	950	12.0
1941	1636.90	1546.90	3186.61	2745.07	441.53	945	13.9
1951	1855.28	1755.60	3610.88	2986.44	624.44	946	17.3
1961	2262.90	2129.42	4392.35	3602.98	789.37	941	18.0
1971	2840.49	2641.10	5481.60	4390.46	1091.14	930	19.9
1981	3533.70	3299.55	6833.29	5238.67	1594.63	934	23.3
1991	4393.58	4070.63	8464.21	6287.69	2176.53	926	25.7
2001	5322.23	4965.14	10287.37	7426.18	2861.20	933	27.8

**Note :** The total population and rural population in 2001 include estimated population of 127,108 for Mao Maram, Paomata and Purul sub-divisions of Senapati district of Manipur. The urban population of J&K for 1991 has been estimated assuming 24% urban population in the state.

**Source :** Registrar General of India.

**8.1(a): Decennial Growth Rate and Average Annual Exponential Growth Rates in Indian Population during 1901-2001**

Year	Decennial Growth rate in total population (%)					Average Annual Exponential Growth Rate in total population(%)				
	Males	Females	Total	Rural	Urban	Males	Females	Total	Rural	Urban
(1)	(2)	(3)	(4)	(5)	(6)	(7)	(8)	(9)	(10)	(11)
1901	NA	NA	NA	NA	NA	NA	NA	NA	NA	NA
1911	6.29	5.41	5.75	6.40	0.35	0.61	0.53	0.56	0.62	0.03
1921	0.13	-0.76	-0.31	-1.29	8.26	0.01	-0.08	-0.03	-0.13	0.79
1931	11.19	10.60	11.00	9.98	19.12	1.06	1.01	1.04	0.95	1.75
1941	14.52	13.92	14.22	11.81	31.97	1.36	1.30	1.33	1.12	2.77
1951	13.34	13.49	13.31	8.79	41.43	1.25	1.27	1.25	0.84	3.47
1961	21.97	21.29	21.64	20.64	26.41	1.99	1.93	1.96	1.88	2.34
1971	25.52	24.03	24.80	21.86	38.23	2.27	2.15	2.22	1.98	3.24
1981	24.40	24.93	24.66	19.32	46.14	2.18	2.23	2.20	1.77	3.79
1991	24.33	23.37	23.87	20.02	36.49	2.18	2.10	2.14	1.83	3.11
2001	21.14	21.97	21.54	18.11	31.46	1.92	1.99	1.95	1.66	2.74
<b>Average Annual Exponential Growth Rate during 1951-2001</b>						<b>2.11</b>	<b>2.08</b>	<b>2.09</b>	<b>1.82</b>	<b>3.04</b>

## 8.2 State-wise Population by Sex and Residence in India as on 1.3.2001

S.No.	State / UT	Rural population			Urban Population			Total		
		Males (3)	Females (4)	Total (5)	Males (6)	Females (7)	Total (8)	Males (9)	Females (10)	Total (11)
1	Andhra Pradesh	27,937,204	27,463,863	55,401,067	10,590,209	10,218,731	20,808,940	38,527,413	37,682,594	76,210,007
2	Arunachal Pradesh	454,680	415,407	870,087	125,261	102,620	227,881	579,941	518,027	1,097,968
3	Assam	11,939,945	11,276,343	23,216,288	1,837,092	1,602,148	3,439,240	13,777,037	12,878,491	26,655,528
4	Bihar	38,594,996	35,721,713	74,316,709	4,648,799	4,033,001	8,681,800	43,243,795	39,754,714	82,998,509
5	Chhattisgarh	8,307,443	8,340,613	16,648,056	2,166,775	2,018,972	4,185,747	10,474,218	10,359,585	20,833,803
6	Delhi	522,087	422,640	944,727	7,085,147	5,820,633	12,905,780	7,607,234	6,243,273	13,850,507
7	Goa	340,545	336,546	677,091	346,703	323,874	670,577	687,248	660,420	1,347,668
8	Gujarat	16,317,771	15,422,996	31,740,767	10,067,806	8,862,444	18,930,250	26,385,577	24,285,440	50,671,017
9	Haryana	8,052,988	6,976,272	15,029,260	3,310,965	2,804,339	6,115,304	11,363,953	9,780,611	21,144,564
10	Himachal Pradesh	2,756,073	2,726,246	5,482,319	331,867	263,714	595,581	3,087,940	2,989,960	6,077,900
11	Jammu & Kashmir	3,977,652	3,649,410	7,627,062	1,383,274	1,133,364	2,516,638	5,360,926	4,782,774	10,143,700
12	Jharkhand	10,679,596	10,272,492	20,952,088	3,205,441	2,788,300	5,993,741	13,885,037	13,060,792	26,945,829
13	Karnataka	17,648,958	17,240,075	34,889,033	9,249,960	8,711,569	17,961,529	26,898,918	25,951,644	52,850,562
14	Kerala	11,451,282	12,123,167	23,574,449	4,017,332	4,249,593	8,266,925	15,468,614	16,372,760	31,841,374
15	Madhya Pradesh	23,031,093	21,349,785	44,380,878	8,412,559	7,554,586	15,967,145	31,443,652	28,904,371	60,348,023
16	Maharashtra	28,458,677	27,318,970	55,777,647	21,941,919	19,159,061	41,100,980	50,400,596	46,478,031	96,878,627
17	Manipur	875,271	842,657	1,717,928	286,681	289,287	575,968	1,161,952	1,131,944	2,293,896
18	Meghalaya	946,999	917,712	1,864,711	229,088	225,023	454,111	1,176,087	1,142,735	2,318,822
19	Mizoram	232,726	214,841	447,567	226,383	214,623	441,006	459,109	429,464	888,573
20	Nagaland	859,716	787,533	1,647,249	187,425	155,362	342,787	1,047,141	942,895	1,990,036
21	Orissa	15,748,970	15,538,452	31,287,422	2,911,600	2,605,638	5,517,238	18,660,570	18,144,090	36,804,660
22	Punjab	8,516,596	7,579,892	16,096,488	4,468,449	3,794,062	8,262,511	12,985,045	11,373,954	24,358,999
23	Rajasthan	22,426,640	20,866,173	43,292,813	6,993,371	6,221,004	13,214,375	29,420,011	27,087,177	56,507,188
24	Sikkim	255,774	225,207	480,981	32,710	27,160	59,870	288,484	252,367	540,851
25	Tamil Nadu	17,531,494	17,390,187	34,921,681	13,869,415	13,614,583	27,483,998	31,400,909	31,004,770	62,405,679
26	Tripura	1,363,638	1,289,815	2,653,453	278,587	267,163	545,750	1,642,225	1,556,978	3,199,203
27	Uttar Pradesh	69,157,470	62,500,869	131,658,339	18,407,899	16,131,683	34,539,582	87,565,369	78,632,552	166,197,921
28	Uttarakhand	3,144,590	3,165,685	6,310,275	1,181,334	997,740	2,179,074	4,325,924	4,163,425	8,489,349
29	West Bengal	29,616,009	28,132,937	57,748,946	11,849,976	10,577,275	22,427,251	41,465,985	38,710,212	80,176,197
30	A & N Islands	128,961	110,993	239,954	64,011	52,187	116,198	192,972	163,180	356,152
31	Chandigarh	56,816	35,304	92,120	450,122	358,393	808,515	506,938	393,697	900,635
32	Dadra & Nagar Haveli	91,832	78,195	170,027	29,834	20,629	50,463	121,666	98,824	220,490
33	Daman & Diu	63,606	37,250	100,856	28,906	28,442	57,348	92,512	65,692	158,204
34	Lakshadweep	17,191	16,492	33,683	13,940	13,027	26,967	31,131	29,519	60,650
35	Puducherry	163,703	162,023	325,726	323,258	325,361	648,619	486,961	487,384	974,345
	<b>India</b>	<b>381668992</b>	<b>360948755</b>	<b>742617747</b>	<b>150554098</b>	<b>135565591</b>	<b>286119689</b>	<b>53223090</b>	<b>496514346</b>	<b>1028737436</b>

**8.3: State-wise Sex Ratio, Decennial Growth Rates and Urban Population in India as on 1.3.2001**

S.No.	State / UT	Percent Distribution of Population	Sex Ratio in 2001 (Females/1000 Males)			Decennial Growth Rate during 1991-2001			Average Annual Exponential Growth Rate during 1991-2001(%)			Proportion of Urban Population in 2001(%)		
			Rural (4)	Urban (5)	Total (6)	Rural (7)	Urban (8)	Total (9)	Rural (10)	Urban (11)	Total (12)	Males (13)	Females (14)	Total (15)
1	Andhra Pradesh	7.41	983	965	978	13.95	16.33	14.59	1.31	1.51	1.36	27.49	27.12	27.30
2	Arunachal Pradesh	0.11	914	819	893	15.41	105.99	27.00	1.43	7.23	2.39	21.60	19.81	20.75
3	Assam	2.59	944	872	935	16.51	38.24	18.92	1.53	3.24	1.73	13.33	12.44	12.90
4	Bihar	8.07	926	868	919	26.99	29.22	27.22	2.39	2.56	2.41	10.75	10.14	10.46
5	Chhattisgarh	2.03	1004	932	989	20.04	32.53	22.35	1.83	2.82	2.02	20.69	19.49	20.09
6	Delhi	1.35	810	822	821	-0.45	52.34	47.02	-0.05	4.21	3.85	93.14	93.23	93.18
7	Goa	0.13	988	934	961	-1.88	39.78	15.21	-0.19	3.35	1.42	50.45	49.04	49.76
8	Gujarat	4.93	945	880	920	17.28	32.88	22.66	1.59	2.84	2.04	38.16	36.49	37.36
9	Haryana	2.06	866	847	861	21.12	50.82	28.43	1.92	4.11	2.50	29.14	28.67	28.92
10	Himachal Pradesh	0.59	989	795	968	16.11	32.59	17.54	1.49	2.82	1.62	10.75	8.82	9.80
11	Jammu & Kashmir	0.99	917	819	892	28.05	33.80	29.43	2.47	2.91	2.58	25.80	23.70	24.81
12	Jharkhand	2.62	962	870	941	26.99	29.33	27.50	2.39	2.57	2.43	23.09	21.35	22.24
13	Karnataka	5.14	977	942	965	12.29	29.15	17.51	1.16	2.56	1.61	34.39	33.57	33.99
14	Kerala	3.10	1059	1058	1058	10.07	7.64	9.43	0.96	0.74	0.90	25.97	25.96	25.96
15	Madhya Pradesh	5.87	927	898	919	20.04	31.09	22.77	1.83	2.71	2.05	26.75	26.14	26.46
16	Maharashtra	9.42	960	873	922	15.25	34.57	22.73	1.42	2.97	2.05	43.54	41.22	42.43
17	Manipur	0.22	963	1009	974	29.02	13.91	24.86	2.55	1.30	2.22	24.67	25.56	25.11
18	Meghalaya	0.23	969	982	972	29.07	37.59	30.65	2.55	3.19	2.67	19.48	19.69	19.58
19	Mizoram	0.09	923	948	935	20.38	38.70	28.82	1.85	3.27	2.53	49.31	49.97	49.63
20	Nagaland	0.19	916	829	900	64.51	64.62	64.53	4.98	4.98	4.98	17.90	16.48	17.23
21	Orissa	3.58	987	895	972	14.08	30.28	16.25	1.32	2.64	1.51	15.60	14.36	14.99
22	Punjab	2.37	890	849	876	12.65	37.86	20.10	1.19	3.21	1.83	34.41	33.36	33.92
23	Rajasthan	5.49	930	890	921	27.56	31.26	28.41	2.43	2.72	2.50	23.77	22.97	23.39
24	Sikkim	0.05	880	830	875	30.19	61.78	33.06	2.64	4.81	2.86	11.34	10.76	11.07
25	Tamil Nadu	6.07	992	982	987	-5.06	44.06	11.72	-0.52	3.65	1.11	44.17	43.91	44.04
26	Tripura	0.31	946	959	948	13.61	29.41	16.03	1.28	2.58	1.49	16.96	17.16	17.06
27	Uttar Pradesh	16.16	904	876	898	23.73	32.98	25.55	2.13	2.85	2.28	21.02	20.52	20.78
28	Uttarakhand	0.83	1007	845	962	23.73	33.42	26.08	2.13	2.88	2.32	27.31	23.96	25.67
29	West Bengal	7.79	950	893	934	16.97	19.88	17.77	1.57	1.81	1.64	28.58	27.32	27.97
30	A & N Islands	0.03	861	815	846	16.65	55.02	26.90	1.54	4.38	2.38	33.17	31.98	32.63
31	Chandigarh	0.09	621	796	777	39.18	40.41	40.28	3.31	3.39	3.38	88.79	91.03	89.77
32	Dadra & Nagar Haveli	0.02	852	691	812	34.14	330.39	59.22	2.94	14.60	4.65	24.52	20.87	22.89
33	Daman & Diu	0.02	586	984	710	86.62	20.62	55.73	6.24	1.88	4.43	31.25	43.30	36.25
34	Lakshadweep	0.01	959	935	948	49.09	-7.37	17.30	3.99	-0.77	1.60	44.78	44.13	44.46
35	Puducherry	0.09	990	1007	1001	12.01	25.46	20.62	1.13	2.27	1.87	66.38	66.76	66.57
	<b>India</b>		<b>946</b>	<b>900</b>	<b>933</b>	<b>18.12</b>	<b>31.46</b>	<b>21.54</b>	<b>1.67</b>	<b>2.74</b>	<b>1.95</b>	<b>28.29</b>	<b>27.30</b>	<b>27.81</b>

**Note :** The Decennial Growth and Average Annual Exponential Growth Rates for the States of Chhattisgarh, Jharkhand and Uttarakhand have been derived from the population estimates of 1991.

**8.4 : State-wise Population Projection by Sex and Residence in India  
as on 1.3.2007 (in lakh)**

S.No.	State / UT	Males	Females	Total	Rural	Urban
(1)	(2)	(3)	(4)	(5)	(6)	(7)
1	Andhra Pradesh	410.80	404.74	815.54	591.12	224.42
2	Arunachal Pradesh	6.24	5.60	11.84	9.39	2.45
3	Assam	149.54	140.99	290.53	256.68	33.85
4	Bihar	478.96	443.12	922.08	826.81	95.27
5	Chhattisgarh	115.14	114.19	229.33	185.83	43.50
6	Delhi	90.98	73.86	164.84	11.30	153.54
7	Goa	8.02	7.37	15.39	7.94	7.45
8	Gujarat	292.19	265.90	558.09	348.39	209.70
9	Haryana	128.07	109.36	237.43	166.40	71.03
10	Himachal Pradesh	33.27	31.99	65.26	58.52	6.74
11	Jammu & Kashmir	58.34	52.65	110.99	90.03	20.96
12	Jharkhand	153.16	144.29	297.45	230.14	67.31
13	Karnataka	288.94	280.15	569.09	374.80	194.29
14	Kerala	163.29	172.06	335.35	251.00	84.35
15	Madhya Pradesh	352.37	323.32	675.69	500.42	175.27
16	Maharashtra	554.70	509.16	1063.86	607.48	456.38
17	Manipur	11.79	11.57	23.36	19.43	3.93
18	Meghalaya	12.66	12.34	25.00	20.14	4.86
19	Mizoram	4.94	4.64	9.58	4.88	4.70
20	Nagaland	11.27	10.19	21.46	17.88	3.58
21	Orissa	198.83	193.93	392.76	335.64	57.12
22	Punjab	141.46	122.45	263.91	173.71	90.20
23	Rajasthan	330.62	303.45	634.07	486.88	147.19
24	Sikkim	3.10	2.73	5.83	5.22	0.61
25	Tamil Nadu	329.71	326.58	656.29	368.42	287.87
26	Tripura	17.67	16.82	34.49	28.75	5.74
27	Uttar Pradesh	984.21	883.35	1867.56	1484.38	383.18
28	Uttrakhand	47.74	45.91	93.65	69.56	24.09
29	West Bengal	443.94	417.31	861.25	625.45	235.80
30	A & N Islands	2.38	1.96	4.34	2.72	1.62
31	Chandigarh	6.67	4.95	11.62	1.06	10.56
32	Dadra & Nagar Haveli	1.64	1.17	2.81	1.97	0.84
33	Daman & Diu	1.39	0.88	2.27	1.17	1.10
34	Lakshadweep	0.37	0.37	0.74	0.37	0.37
35	Puducherry	5.79	5.67	11.46	3.54	7.92
	<b>India</b>	<b>5840.19</b>	<b>5445.02</b>	<b>11285.21</b>	<b>8167.42</b>	<b>3117.79</b>

**Note :** Rural Population is estimated based on the rural-urban ratio of the population of Census, 2001.

**8.5: State-wise Literacy Rate in India in 2001 (Population aged 7 years & above)**

(in percentage)

S. No.	States/UTs	Male	Female	Total
(1)	(2)	(3)	(4)	(5)
1	Andhra Pradesh	75.3	53.7	64.8
2	Arunachal Pradesh	70.3	50.4	60.5
3	Assam	71.3	54.6	54.3
4	Bihar	59.7	33.1	47
5	Chhattisgarh	77.4	51.9	64.7
6	Delhi	87.3	74.7	81.7
7	Goa	88.4	75.4	82
8	Gujarat	79.7	57.8	69.1
9	Haryana	78.5	55.7	67.9
10	Himachal Pradesh	85.3	67.4	76.5
11	Jammu & Kashmir	66.6	43	55.5
12	Jharkhand	67.3	38.9	53.6
13	Karnataka	76.1	56.9	66.6
14	Kerala	94.2	87.7	90.9
15	Madhya Pradesh	76.1	50.3	63.7
16	Maharashtra	86	67	76.9
17	Manipur	80.3	60.5	70.5
18	Meghalaya	65.4	59.6	62.6
19	Mizoram	90.7	86.7	88.8
20	Nagaland	71.2	61.5	66.6
21	Orissa	75.3	50.5	63.1
22	Punjab	75.2	63.4	69.7
23	Rajasthan	75.7	43.9	60.4
24	Sikkim	76	60.4	68.8
25	Tamil Nadu	82.4	64.4	73.5
26	Tripura	81	64.9	73.2
27	Uttar Pradesh	68.8	42.2	56.3
28	Uttarakhand	83.3	59.6	71.6
29	West Bengal	77	59.6	68.6
30	A & N Islands	86.3	75.2	81.3
31	Chandigarh	86.1	76.5	81.9
32	D & N Haveli	71.2	40.2	57.6
33	Daman & Diu	86.8	65.6	78.2
34	Lakshadweep	92.5	80.5	86.7
35	Puducherry	88.6	73.9	81.2
	<b>All India</b>	<b>75.3</b>	<b>53.7</b>	<b>64.8</b>

**Source:** Primary Census Abstract: Census of India 2001.

**8.6: Life Expectancy at Birth in India**

(in years)

Year	Male	Female
(1)	(2)	(3)
1991-1995	59.7	60.9
1992-1996	60.1	61.4
1993-1997	60.4	61.8
1994-1998	60.6	62.2
1995-1999	60.8	62.5
1996-2000	61.0	62.7
1997-2001	61.3	63.6
1998-2002	61.6	63.3
1999-2003	61.8	63.5
2000-2004	62.1	63.7
2001-2005	62.3	63.9

**Source:** SRS Bulletin October, 2007 (RGI).**8.7: Year-wise estimated Crude Birth Rate, Crude Death Rate and Natural Growth Rate in India (per thousand population)**

Year	Crude Birth rate			Crude Death Rate			Natural Growth rate		
	Rural	Urban	Combined	Rural	Urban	Combined	Rural	Urban	Combined
(1)	(2)	(3)	(4)	(5)	(6)	(7)	(8)	(9)	(10)
1991	30.9	24.3	29.5	10.6	7.1	9.8	20.3	17.2	19.7
1992	30.9	23.1	29.2	10.9	7.0	10.1	20.0	16.1	19.1
1993	30.4	23.7	28.7	10.6	5.8	9.3	19.8	17.9	19.4
1994	30.5	23.1	28.7	10.1	6.7	9.3	20.4	16.4	19.4
1995	30.0	22.7	28.3	9.8	6.6	9.0	20.2	16.1	19.3
1996	29.3	21.6	27.5	9.7	6.5	9.0	19.6	15.1	18.5
1997	28.9	21.5	27.2	9.6	6.5	8.9	19.3	15.0	18.3
1998	28.0	21.0	26.5	9.7	6.6	9.0	18.3	14.5	17.5
1999	27.6	20.8	26.1	9.4	6.3	8.7	18.2	14.5	17.4
2000	27.6	20.7	25.8	9.3	6.3	8.5	18.3	14.4	17.3
2001	27.1	20.3	25.4	9.1	6.3	8.4	18.1	14.0	17.0
2002	26.6	20.0	25.0	8.7	6.1	8.1	17.9	13.9	16.9
2003	26.4	19.8	24.8	8.7	6.0	8.0	17.8	13.8	16.8
2004	25.9	19.0	24.1	8.2	5.8	7.5	17.8	13.3	16.6
2005	25.6	19.1	23.8	8.1	6.0	7.6	17.5	13.1	16.3
2006	25.2	18.8	23.5	8.1	6.0	7.5	17.2	12.8	16.0

**Source:** SRS Bulletin October, 2007 (RGI).

**8.8: State-wise estimated Crude Birth Rate and Crude Death Rate in 2006  
(per thousand population)**

S. No.	States/UTs	Crude Birth Rate			Crude Death Rate			Natural Growth Rate		
		Rural	Urban	Total	Rural	Urban	Total	Rural	Urban	Total
(1)	(2)	(3)	(4)	(5)	(6)	(7)	(8)	(9)	(10)	(11)
1	Andhra Pradesh	19.8	16.5	18.9	7.9	5.8	7.3	11.9	10.7	11.6
2	Arunachal Pradesh	23.8	17.4	22.5	5.5	2.8	5.0	18.3	14.6	17.5
3	Assam	26.1	15.4	24.6	9.2	5.8	8.7	16.9	9.6	15.9
4	Bihar	30.7	23.0	29.9	7.8	6.3	7.7	22.9	16.7	22.2
5	Chhattisgarh	28.5	19.9	26.9	8.5	6.3	8.1	20.0	13.6	18.8
6	Delhi	19.5	18.2	18.4	5.4	4.6	4.7	14.1	13.6	13.7
7	Goa	13.5	16.2	15.1	8.2	6.9	7.4	5.3	9.3	7.7
8	Gujarat	25.0	21.1	23.5	8.2	5.9	7.3	16.8	15.2	16.2
9	Haryana	25.1	21.1	23.9	6.9	5.6	6.5	18.2	15.5	17.4
10	Himachal Pradesh	19.5	12.4	18.8	7.1	4.8	6.8	12.4	7.6	12.0
11	Jammu & Kashmir	20.0	14.2	18.7	6.1	5.0	5.9	13.9	9.2	12.8
12	Jharkhand	28.0	18.8	26.2	7.9	5.9	7.5	20.1	12.9	18.7
13	Karnataka	21.5	17.7	20.1	8.0	5.5	7.1	13.5	12.2	13.0
14	Kerala	15.0	14.6	14.9	6.8	6.5	6.7	8.2	8.1	8.2
15	Madhya Pradesh	31.2	21.9	29.1	9.6	6.3	8.9	21.6	15.6	20.2
16	Maharashtra	19.2	17.5	18.5	7.4	5.8	6.7	11.8	11.7	11.8
17	Manipur	13.5	13.1	13.4	4.4	4.6	4.5	9.1	8.5	8.9
18	Meghalaya	26.4	17.1	24.7	8.5	5.8	8.0	17.9	11.3	16.7
19	Mizoram	21.6	14.0	17.8	6.2	4.8	5.5	15.4	9.2	12.3
20	Nagaland	16.8	19.2	17.3	4.9	4.1	4.8	11.9	15.1	12.5
21	Orissa	22.8	16.2	21.9	9.7	6.9	9.3	13.1	9.3	12.6
22	Punjab	18.4	16.8	17.8	7.4	5.8	6.8	11.0	11.0	11.0
23	Rajasthan	29.7	23.9	28.3	7.2	6.1	6.9	22.5	17.8	21.4
24	Sikkim	19.5	17.7	19.2	5.7	4.7	5.6	13.8	13.0	13.6
25	Tamil Nadu	16.5	15.9	16.2	8.3	6.4	7.5	8.2	9.5	8.7
26	Tripura	17.3	13.4	16.6	6.2	6.8	6.3	11.1	6.6	10.3
27	Uttar Pradesh	31.0	26.0	30.1	9.1	6.6	8.6	21.9	19.4	21.5
28	Uttarakhand	22.0	17.3	21.0	7.0	5.5	6.7	15.0	11.8	14.3
29	West Bengal	20.7	12.3	18.4	6.2	6.3	6.2	14.5	6.0	12.2
30	A & N Islands	17.1	13.2	15.7	5.7	3.8	5.1	11.4	9.4	10.6
31	Chandigarh	23.5	15.1	15.8	3.1	4.2	4.1	20.4	10.9	11.7
32	D & N Haveli	27.8	29.4	28.1	5.3	3.1	4.8	22.5	26.3	23.3
33	Daman & Diu	20.2	15.5	18.4	5.0	6.1	5.5	15.2	9.4	12.9
34	Lakshadweep	18.7	19.1	18.9	6.8	6.0	6.4	11.9	13.1	12.5
35	Puducherry	16.3	15.4	15.7	8.0	7.0	7.3	8.3	8.4	8.4
	<b>All India</b>	<b>25.2</b>	<b>18.8</b>	<b>23.5</b>	<b>8.1</b>	<b>7.0</b>	<b>7.5</b>	<b>17.1</b>	<b>11.8</b>	<b>16.0</b>

Source : SRS Bulletin October, 2007 (RGI).

### 8.9: Infant Mortality, Neo-natal Mortality, Post-natal Mortality, Peri-natal Mortality and Still Birth Rates in India since 1993

Year	Infant mortality rate *			Neo-natal mortality rate *			Post-natal mortality rate *			Peri-natal mortality rate †			Still birth rate †		
	Rural	Urban	Total	Rural	Urban	Total	Rural	Urban	Total	Rural	Urban	Total	Rural	Urban	Total
(1)	(2)	(3)	(4)	(5)	(6)	(7)	(8)	(9)	(10)	(11)	(12)	(13)	(14)	(15)	(16)
1993	82.0	45.0	74.0	52.3	28.4	47.1	28.2	15.8	25.5	47.9	31.0	44.2	10.8	9.3	10.5
1994	80.0	52.0	74.0	52.0	32.6	47.7	27.5	19.6	26.0	43.4	38.7	42.5	7.3	15.2	8.9
1995	80.0	48.0	74.0	52.3	29.2	48.1	27.5	19.0	25.9	47.6	31.2	44.6	9.3	8.8	9.2
1996	77.0	46.0	72.0	50.0	28.0	47.0	27.0	17.0	25.0	46.0	32.0	44.0	9.0	9.0	9.0
1997	77.0	45.1	71.0	50.5	26.2	46.1	26.5	19.0	25.1	46.3	29.1	43.2	8.6	9.0	8.7
1998	77.4	44.9	71.6	49.0	27.0	45.1	28.4	17.9	26.5	45.2	29.3	42.4	8.9	7.9	8.7
1999	75.0	44.0	70.0	49.0	28.0	45.0	26.0	16.0	24.0	47.0	30.0	44.0	11.0	8.0	10.0
2000	74.0	44.0	68.0	49.0	27.0	44.0	25.0	16.0	23.0	44.0	26.0	40.0	9.0	7.0	8.0
2001	71.7	42.4	65.9	44.0	24.9	40.2	27.7	17.4	25.7	39.1	24.7	26.2	9.7	7.9	9.3
2002	69.0	40.0	64.0	NA	NA	NA	NA	NA	NA	NA	NA	NA	NA	NA	NA
2003	66.0	38.0	60.0	41.0	22.0	37.0	25.0	16.0	23.0	36.0	20.0	33.0	9.0	8.0	9.0
2004	64.0	40.0	58.0	41.0	24.0	37.0	22.0	16.0	21.0	39.0	23.0	35.0	10.0	8.0	10.0
2005	64.0	40.0	58.0	41.0	23.0	37.0	23.0	17.0	22.0	40.0	24.0	37.0	9.0	8.0	9.0

**Note :** For the still birth rate and peri-natal mortality rate, figures are per thousand live & still births, for other rates, figures are per thousand live births.

8.10: State-wise Infant Mortality Rate by Sex and Residence in 2006 (per thousand live births)

S.No.	States/UTs	Rural			Urban			Combined		
		Male (3)	Female (4)	Total (5)	Male (6)	Female (7)	Total (8)	Male (9)	Female (10)	Total (11)
1	Andhra Pradesh	61	63	62	37	41	38	55	58	56
2	Arunachal Pradesh							38	43	40
3	Assam	69	71	70	41	43	42	67	68	67
4	Bihar	59	64	62	43	47	45	58	63	60
5	Chhattisgarh	61	64	62	48	53	50	59	62	61
6	Delhi	40	44	42	35	38	36	36	39	37
7	Goa							16	14	15
8	Gujarat	60	64	62	36	37	37	52	54	53
9	Haryana	61	62	62	45	45	45	57	58	57
10	Himachal Pradesh							45	55	50
11	Jammu & Kashmir	54	55	54	33	44	38	51	53	52
12	Jharkhand	49	55	52	32	33	32	46	52	49
13	Karnataka	50	57	53	36	35	36	46	50	48
14	Kerala	15	17	16	11	14	12	14	16	15
15	Madhya Pradesh	77	81	79	50	54	52	72	77	74
16	Maharashtra	41	42	42	25	27	26	35	36	35
17	Manipur							10	13	11
18	Meghalaya							53	52	53
19	Mizoram							24	25	25
20	Nagaland							17	23	20
21	Orissa	75	76	76	52	54	53	73	74	73
22	Punjab	41	57	48	34	38	36	39	50	44
23	Rajasthan	72	76	74	40	42	41	65	69	67
24	Sikkim							26	40	33
25	Tamil Nadu	38	41	39	33	33	33	36	37	37
26	Tripura							31	41	36
27	Uttar Pradesh	74	76	75	51	54	53	70	73	71
28	Uttarakhand							42	44	43
29	West Bengal	39	42	40	27	31	29	37	40	38
30	A & N Islands							27	36	31
31	Chandigarh							20	27	23
32	D & N Haveli							28	44	35
33	Daman & Diu							28	28	28
34	Lakshadweep							29	21	25
35	Puducherry							20	36	28
	<b>All India</b>	<b>61</b>	<b>64</b>	<b>62</b>	<b>37</b>	<b>40</b>	<b>39</b>	<b>56</b>	<b>59</b>	<b>57</b>

Source: SRS Bulletin October, 2007 (RGI).

**8.11 : Total Fertility Rate by Residence in India in 2005 (Major States)**

S. No.	State / UT	Rural	Urban	Total
(1)	(2)	(3)	(4)	(5)
1	Andhra Pradesh	2.2	1.7	2.0
2	Assam	3.1	1.6	2.9
3	Bihar	4.4	3.2	4.3
4	Chhattisgarh	3.7	2.2	3.4
5	Delhi	2.2	2.1	2.1
6	Gujarat	3.1	2.3	2.8
7	Haryana	3.0	2.3	2.8
8	Himachal Pradesh	2.2	1.5	2.2
9	Jammu & Kashmir	2.6	1.6	2.4
10	Jharkhand	3.9	2.3	3.5
11	Karnataka	2.5	1.8	2.2
12	Kerala	1.7	1.7	1.7
13	Madhya Pradesh	4.0	2.5	3.6
14	Maharashtra	2.4	1.9	2.2
15	Orissa	2.7	1.7	2.6
16	Punjab	2.2	1.9	2.1
17	Rajasthan	4.0	2.7	3.7
18	Tamil Nadu	1.8	1.6	1.7
19	Uttar Pradesh	4.5	3.3	4.2
20	West Bengal	2.4	1.4	2.1
	<b>All India</b>	<b>3.2</b>	<b>2.1</b>	<b>2.9</b>

**Source :** Statistical Report, Registrar General of India, 2005 (Latest)